

# AIRMIX® TIP CHART



Linked Parts Manual  
Click on the Images and Part numbers

Tip Number	Orifice		Gun Filter		Pump Filter		Spray Angle and Max fan width at gun target distance of 10" from Substrate														
							10°	18°	30°	40°	45°	50°	60°	67°	75°	82°	90°				
							3.5"	5"	7"	9"	9.5"	10"	12"	13"	15"	18"	22"				
							9 cm	13 cm	18 cm	23 cm	24 cm	25 cm	31 cm	33 cm	38 cm	46 cm	60 cm				
02	0.005	0.127	140 (4)		200 (2)	02-034	02-054														
03	0.007	0.178				03-034	03-054	03-074													
04	0.009	0.229			140 (4)		04-034	04-054	04-074	04-094	04-104	04-114	04-134								
06	0.011	0.279					06-034	06-054	06-074	06-094	06-104	06-114	06-134	06-154							
09	0.013	0.330	85 (6)		85 (6)	09-034	09-054	09-074	09-094	09-104	09-114	09-134	09-154								
12	0.015	0.381			70 (8)			12-054	12-074	12-094	12-104	12-114	12-134	12-154	12-174						
14	0.016	0.406	60 (12)				60 (12)	14-034	14-054	14-074	14-094	14-104	14-114	14-134	14-154	14-174					
18	0.018	0.457							18-054	18-074	18-094	18-104	18-114	18-134	18-154	18-174					
20	0.020	0.508								20-074	20-094	20-104	20-114	20-134	20-154	20-174	20-194				
25	0.022	0.559								25-074	25-094	25-104	25-114	25-134	25-154	25-174					
30	0.024	0.610					30-074	30-094	30-104	30-114	30-134	30-154	30-174	30-194							
40	0.027	0.686						40-094	40-104	40-114	40-134	40-154	40-174	40-194	40-214						
45	0.029	0.737							45-104	45-114	45-134	45-154	45-174	45-194	45-214						
60	0.031	0.787							60-104	60-114	60-134	60-154	60-174	60-194	60-214						

The choice of the tip is based on the desired flow rate in order to achieve a good finish and reduce paint costs. An AIRMIX® tip needs to be replaced frequently in order to maintain the original transfer efficiency.

To order a tip, replace the "x" characters in the table, by the chosen tip number in 134-5xx-xx4 for a Fine Finish or 134-5xx-xx2 for an Xtra™ Fine Finish tip, recommended for water-based materials or for an increased atomization quality due to the preatomization.

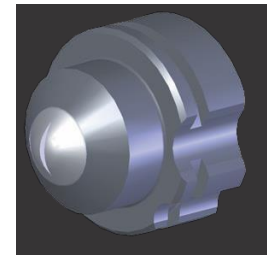
For example: order 134-509-094 (Fine Finish) or 134-509-092 (Xtra™ Fine Finish) if choosing a 09-09 tip.

**Standard tips**  
- To order a tip, replace the crosses in 134-5xx-xx4 with the corresponding number from the chart above. (Example: 134-506-094 for a 06-09 tip)

**Xtra™ tips**  
To order a tip, replace the crosses in 134-5xx-xx2 with the corresponding number from the chart above. (Example: 134-506-092 for a 06-09 tip) Ideally used for waterborne materials.

**Special Order tips**  
- These tips require a minimum of 25 tips per order and these tips cannot be ordered in the Xtra™ tip style.

**Optimum Fan Adjustment**  
- These tips allow for fan adjustment when used with a VX24 air cap.



# Fine Finish TIP CHART



Linked Parts Manual  
Click on the Images and Part numbers

Tip Number	Orifice	Orifice	Gun Filter		Pump Filter		Spray Angle and Max fan width at gun target distance of 10" from Substrate												
			Mesh	Filter #	Mesh	Filter #	10°	18°	30°	40°	45°	50°	60°	67°	75°	82°	90°		
							3.5"	5"	7"	9"	9.5"	10"	12"	13"	15"	18"	22"		
							9 cm	13 cm	18 cm	23 cm	24 cm	25 cm	31 cm	33 cm	38 cm	46 cm	60 cm		
02	0.005	0.127	140 (4)		200 (2)														
03	0.007	0.178																	
04	0.009	0.229						140 (4)	04-032	04-052	04-072	04-092		04-112					
06	0.011	0.279				06-032	06-052	06-072	06-092		06-112	06-132	06-152						
09	0.013	0.330	85 (6)		85 (6)	09-032	09-052	09-072	09-092		09-112	09-132	09-152						
12	0.015	0.381			70 (8)				12-072	12-092		12-112	12-132	12-152	12-172				
14	0.016	0.406	60 (12)				14-052	14-072	14-092		14-112	14-132	14-152	14-172					
18	0.018	0.457																	
20	0.020	0.508								20-092			20-132						
25	0.022	0.559																	
30	0.024	0.610																	
40	0.027	0.686																	
45	0.029	0.737																	
60	0.031	0.787																	

The choice of the tip is based on the desired flow rate in order to achieve a good finish and reduce paint costs. An AIRMIX® tip needs to be replaced frequently in order to maintain the original transfer efficiency.

To order a tip, replace the "x" characters in the table, by the chosen tip number in 134-5xx-xx4 for a Fine Finish or 134-5xx-xx2 for an Xtra™ Fine Finish tip, recommended for water-based materials or for an increased atomization quality due to the preatomization.

For example: order 134-509-092 (Fine Finish) or 134-509-092 (Xtra™ Fine Finish) if choosing a 09-09 tip.

**[Yellow Box] = Xtra™ tips**  
To order a tip, replace the crosses in 134-5xx-xx2 with the corresponding number from the chart above. (Example: 134-506-092 for a 06-09 tip) Ideally used for waterborne materials.

**[Red Dashed Box] = Optimum Fan Adjustment**  
- These tips allow for fan adjustment when used with a VX24 air cap.

