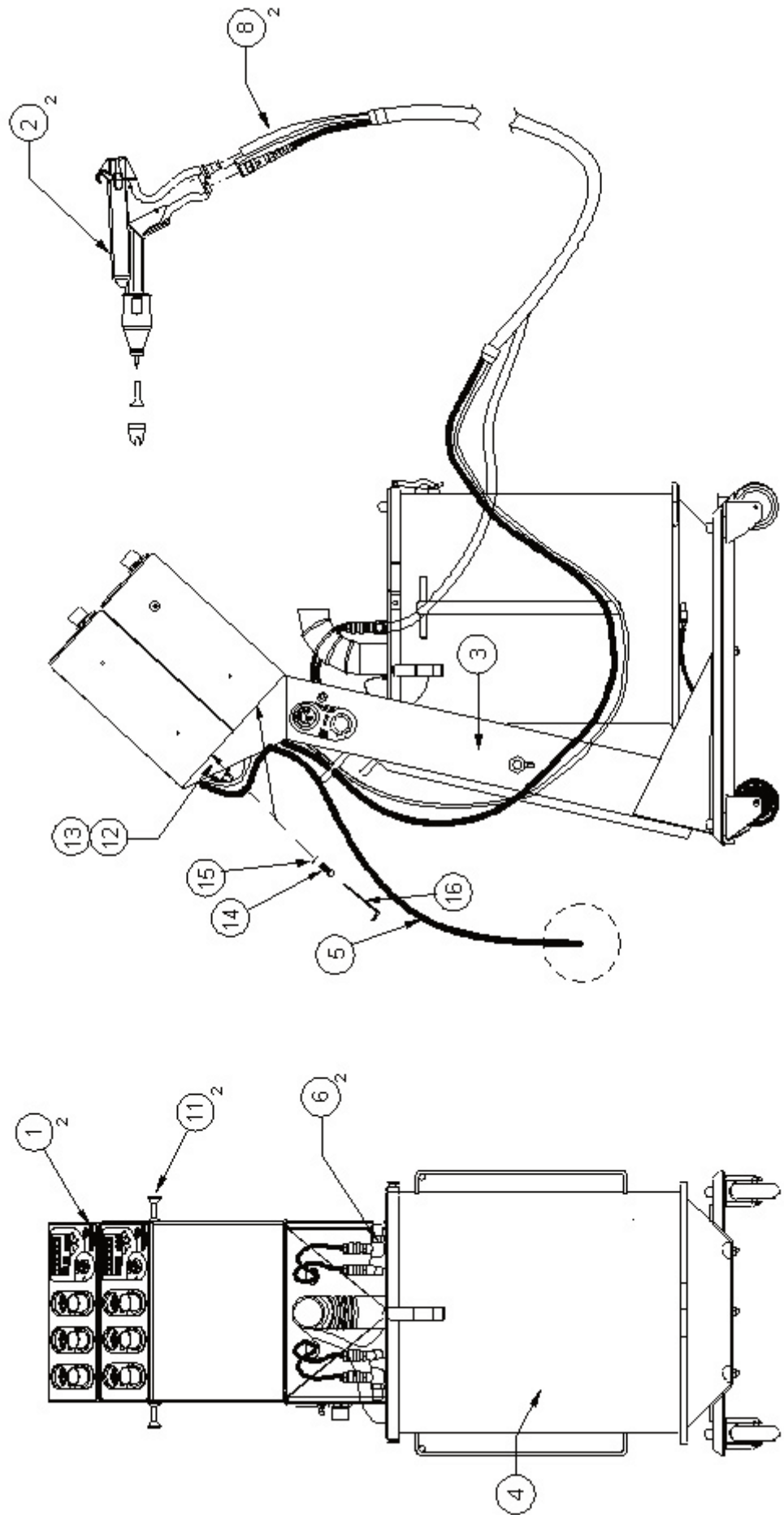
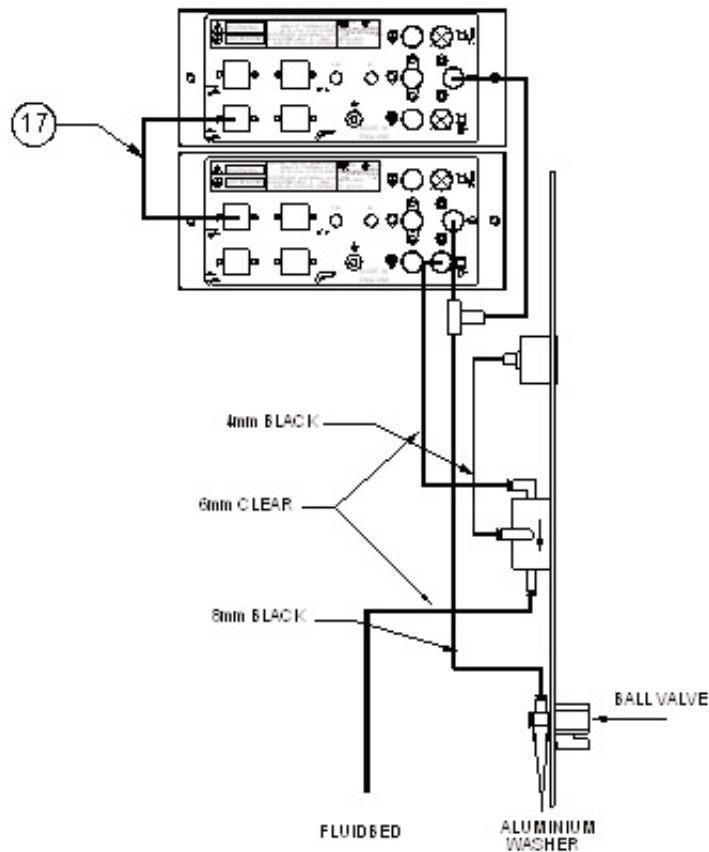


400H2 Fluidbed Unit
 Double Operator, General Assembly
 Part No. 5008005/S
 Illustration No. 6000221



Double Fluidbed, Piping Diagram

Illustration No. 6000222

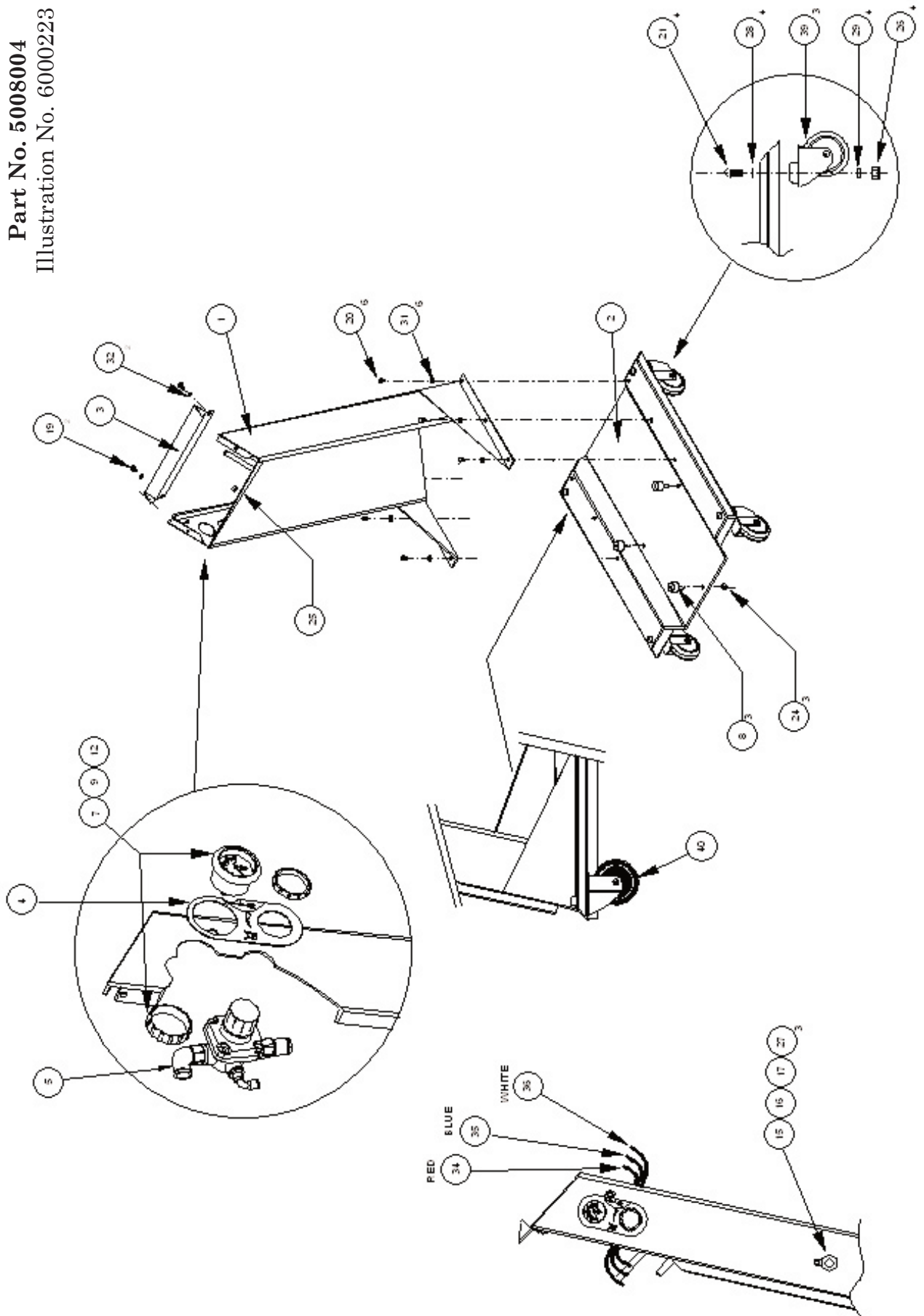


400 Series Fluidized Hopper Unit, Double Operator, General Assembly Parts List

Item	Part Number	Description	Quantity
1	2024002	Gun Control Unit - GCU 400	2
2	3019002	Manual Powder Gun - MG 400	2
3	5008004	Chassis Assy, 400 Boxfeed	1
4	5008003	Fluidbed Body 50L	1
5	5000038	Main Lead Assy	1
6	2095002	Venturi Assy, 400 Series	2
7	5008006	Suction Tube Assembly (NS)	2
8	3019036	Hose & Cable Set, 5M	2
10	5009020	Lift Tube Mounting Spigot (NS)	2
11	5009024	Gun Mounting Pillar	2
12	5009026	Mounting Bracket Left	1
13	5009027	Mounting Bracket Right (NS)	1
14	9000657	Screw, M6 x 10 Skt, Cap Head	2
15	9000840	Washer, M6, Crinkle	2
16	9001914	M5 Long Handle Allen Key	1
17	2001040	Main Interconnection Cable	1
18	7000001	M4 Allen Key (NS)	1
19	7000000	M3 Allen Key (NS)	1
20	3019026	Latch Ring (NS)	2
21	9000821	Lock Nut, 3/4 BSP (NS)	2

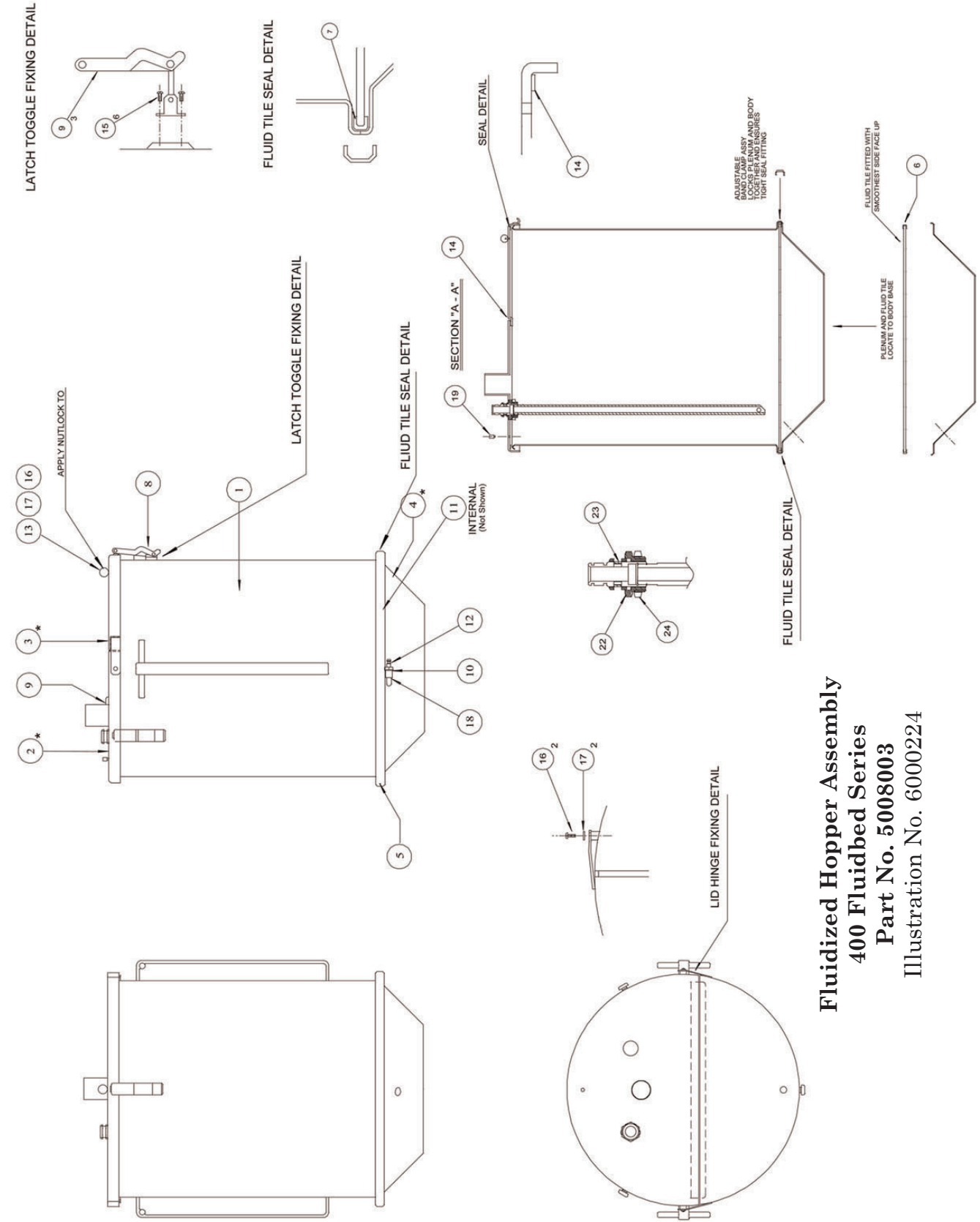
(NS) - Not Shown on this illustration

Chassis Assembly
 400 Fluidbed Series
 Part No. 5008004
 Illustration No. 6000223



Chassis Assembly, 400 Series Fluidized Hopper Feed Unit Parts List

Item	Part Number	Description	Quantity
1	5009017	Box Column Support	1
2	5009023	Box Base	1
3	5009022	Shelf	1
4	5009030	Regulator Overlay	1
5	5009007	Regulator Assembly,	1
6			
7	9001879	Pressure Gauge,4 bar Panel Mtg,Screw Body	1
8	9001915	Rubber Feet	3
9	5000040	Disc, Porous Plastic	1
10			
11			
12	9000052	Straight 1/8 BSPFP 4mm OD Tube, PI (NS)	1
13	9001672	Elbow, M5 - 6mm OD Tube, PI (NS)	1
14	9000366	Tee, 6mm.EquAl PI (NS)	1
15	9001892	Ball Valve ¼ Mini	1
16	9001886	Banjo Bolt	1
17	9001888	Banjo Ring Piece	1
18			
19	9000603	Screw, M5 x 10 Skt. Btn. Hd. Blk. Zinc	2
20	9000650	Screw, M6 x 12 Skt. Btn. Hd. Blk. Zinc	7
21	9000760	Screw, M10 x 30 Skt. Btn. Hd. Blk.	4
22			
23			
24	9000809	Nut, M5 Nyloc	3
25	9000803	Nut, M6 Nyloc	1
26	9000808	Nut, M10 Nyloc	4
27	9001887	Washer, Aluminum	3
28	9000837	Washer M10. S/P	4
29	9000836	Washer M10 Plain	4
30			
31	9000835	Washer M6 S/P	7
32	9000849	Washer M6 Plain Full	2
33			
34	9000168	Tubing, 6x 4 PU, Red	1 Mtr
35	9000169	Tubing, 6x 4 PU, Blue	1 Mtr
36	9000170	Tubing, 6x 4 PU, Clear	1 Mtr
37	9000203	Tubing, 4x 2.5 PU, Black	0.1 Mtr
38			
39	9000065	Castor, 75mm Dia. Rubber	3
40	9000064	Castor, 75mm Dia. Elec. Conductive Rubber	1
41			
42			
43			
44			
45			



Fluidized Hopper Assembly
400 Fluidbed Series
Part No. 5008003
 Illustration No. 6000224

Fluidized Hopper Assembly, 400 Series Fluidbed Unit Parts List

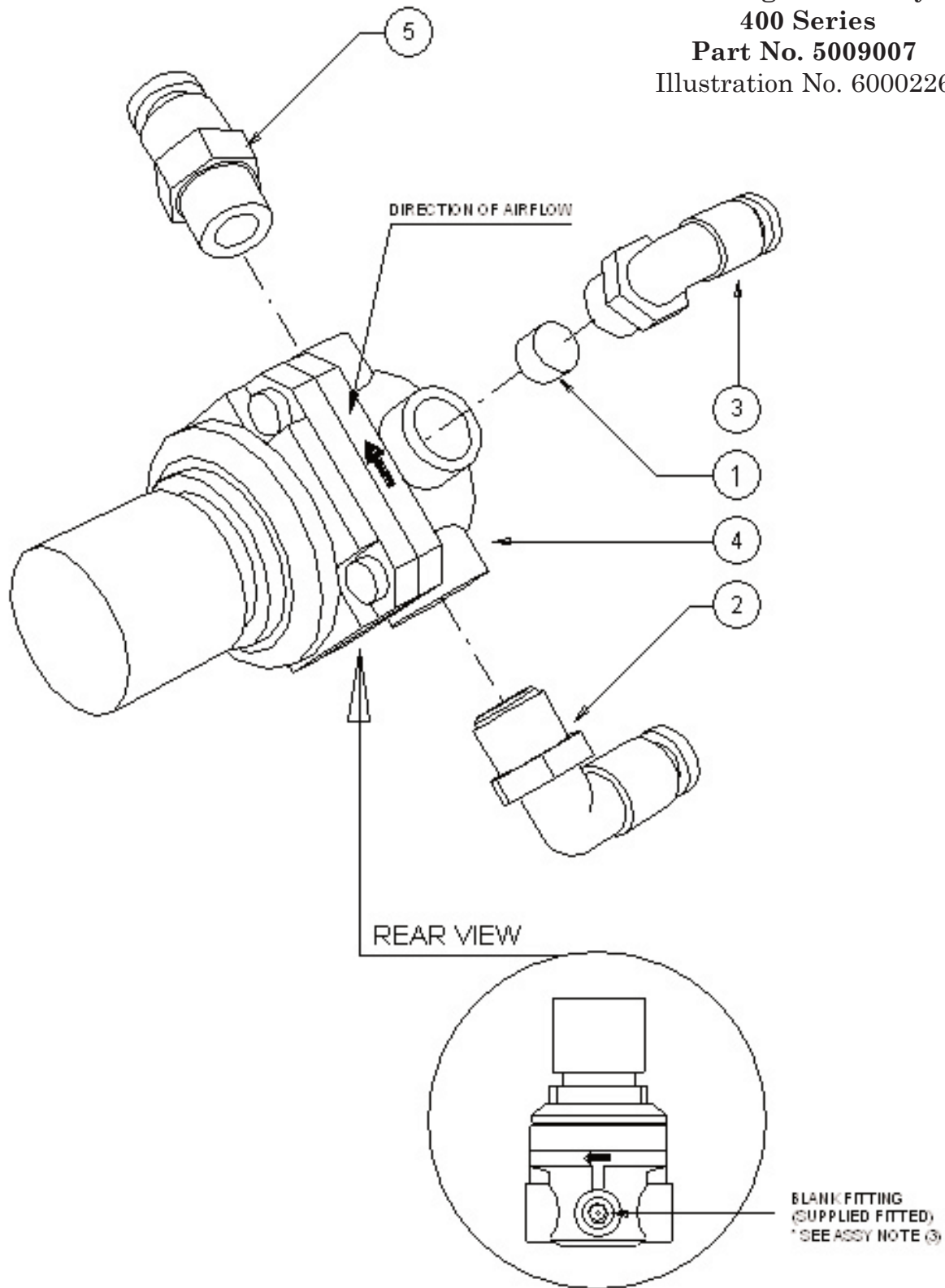
Item	Part Number	Description	Quantity
1	5008021	Body, Fluidbed 50L	1
2	5008022A	Lid, F/B 50L Venturi Section	1
3	5008022B	Lid, F/B 50L Access Section	1
4	5008020	Plenum, 50L	1
5	5008023	Band Clamp	1
6	5000006	Tile, F/B 50L	1
7	5000033	Seal Fluid Tile, 50L	1
8			
9	9000068	Latch, Toggle, Rubber	3
10	9000852	Washer, 1/8 BSP, White Nylon	1
11	9001108	Straight M5FP-1/8BSP MP BNP	1
12	9001083	1/8 BSP Male Plug	1
13	9000347	Ball, Knob, Flat Lid	1
14	9001838	Seal Strip Self Adhesive, 15mmx5mm	2.4
15	9000552	Screw, M4x6 Pan Head	6
16	9000650	Screw, M6x12 Skt, Btn. HD, Black	3
17	9000849	Washer, M6 Plain	3
18	9000189	Elbow 1/8 BSP	1
19	9000113	Terminal, Earth, G/Y, Panel MNT.	1
20	9000302	Grommet, Blank, F/B	1
21	9000272	Quick Release Fitting	1
22	5009020	Lift Tube Mounting Spigot	1
23	3019026	Latch Ring	1
24	9000821	Lock Nut, 3/4 BSP	1

Pressure Regulator Assy 4 Bar

400 Series

Part No. 5009007

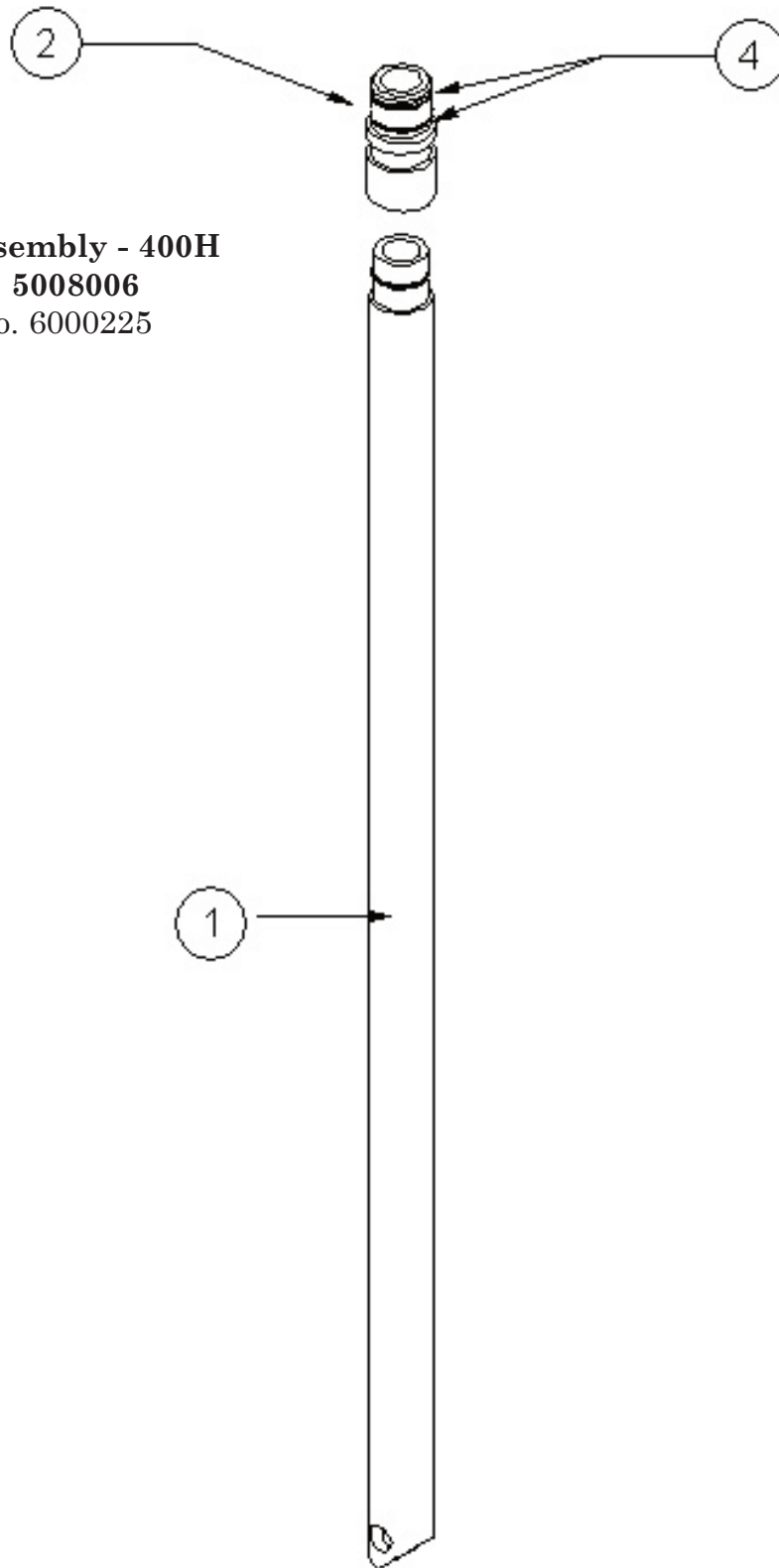
Illustration No. 6000226



Pressure Regulator Assy 4 Bar, 400 Series, Parts List

Item	Part Number	Description	Quantity
1	5000050	Disc Porous Plastic 8 x 3.2Thk	1
2	9000033	Elbow, 1/4BSPMT 6mm OD Short PI	1
3	9000062	Elbow, 1/8BSPMT 4mm OD Short PI	1
4	9000112	Pressure Regulator, 4 Bar	1
5	9001889	Straight 1/8 BSP 6mm OD Tube PI	1

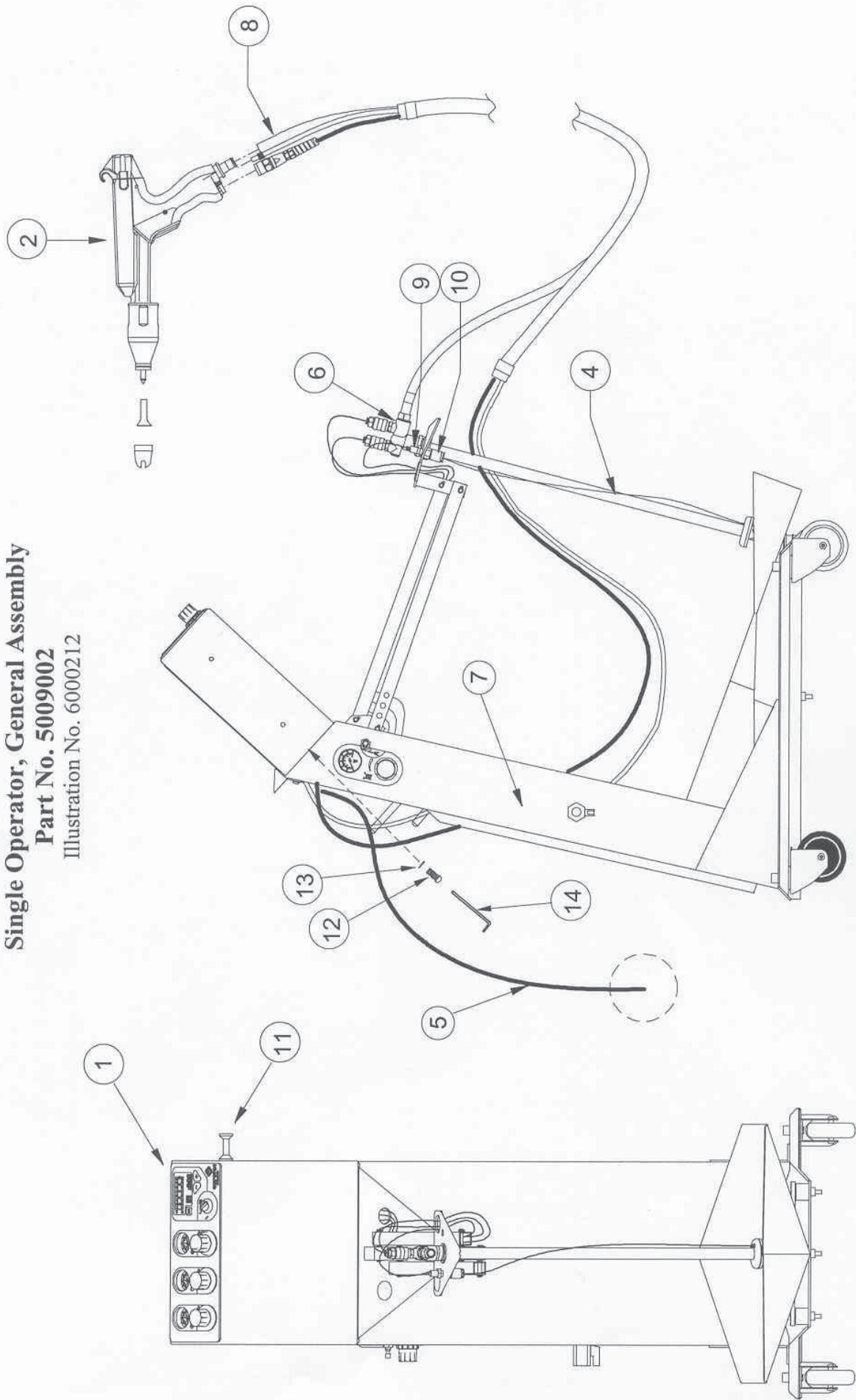
BOND TO ITEM 1
USING EPOXY ADHESIVE



Suction Tube Assembly - 400H
Product No. 5008006
Illustration No. 6000225

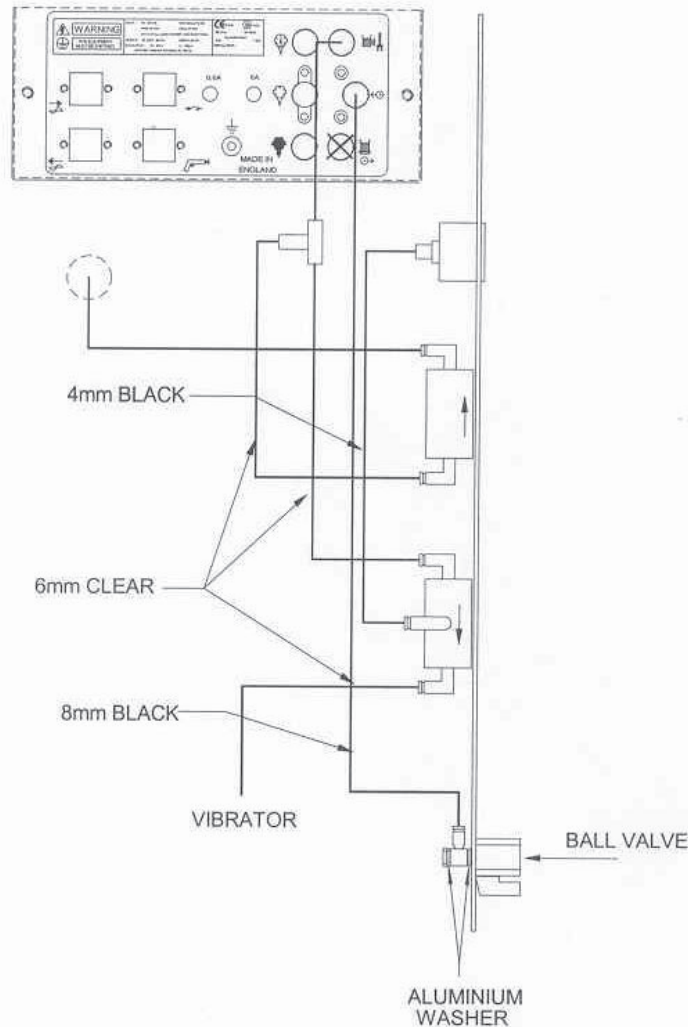
Suction Tube Assembly - 400H, 400 Series, Parts List			
Item	Part Number	Description	Quantity
1	5008024	Lift Tube, Fluidbed 50L	1
2	5009019	Venturi Lift Top	1
3			
4	9001863	O-Ring 12 x 2, Silicone	2
5			

400 Series Boxfeed Unit
Single Operator, General Assembly
Part No. 5009002
 Illustration No. 6000212



Single Boxfeed, Piping Diagram

Illustration No. 6000214

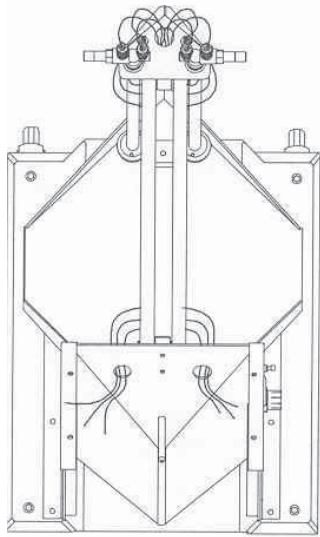


400D Boxfeed Unit, Single Operator, General Assembly

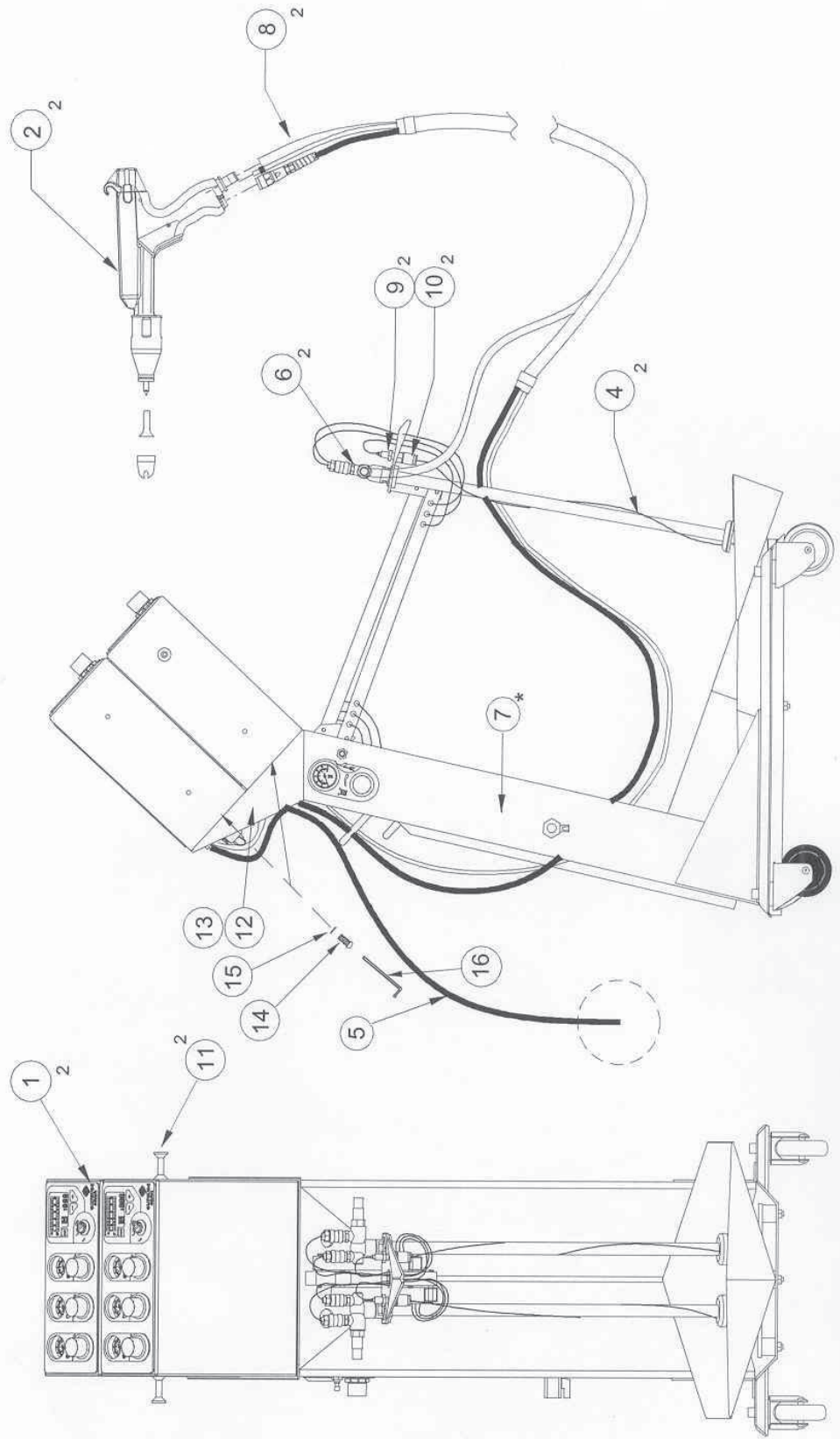
Item	Part Number	Description	Quantity
1	2024002	Gun Control Unit - GCU 400	1
2	3019002	Manual Powder Gun - MG 400	1
3			
4	5009006	Suction Tube Assembly	1
5	5000043	Main Lead Assy, US/Japan	1
6	2095002	Venturi Assy, 400 Series	1
7	5009004	Chassis Assy, 400 Boxfeed	1
8	3019036	Hose & Cable Set, 5M	1
9	9001506	QD Air Fitting	1
10	9001507	QD Air Fitting	1
11	5009024	Gun Mounting Pillar	1
12	9000657	Screw, M6 x 10 Skt, Cap Head	2
13	9000840	Washer, M6, Crinkle	2
14	9001914	M5 Long Handle Allen Key	1
15	7000001	M4 Allen Key (NS)	1
16	7000000	M3 Allen Key (NS)	1
17	5009031	Warning Label (NS)	1

(NS) - Not Shown on this illustration

400 Series Boxfeed Unit
Double Operator, General Assembly
Part No. 5009005
 Illustration No. 6000213

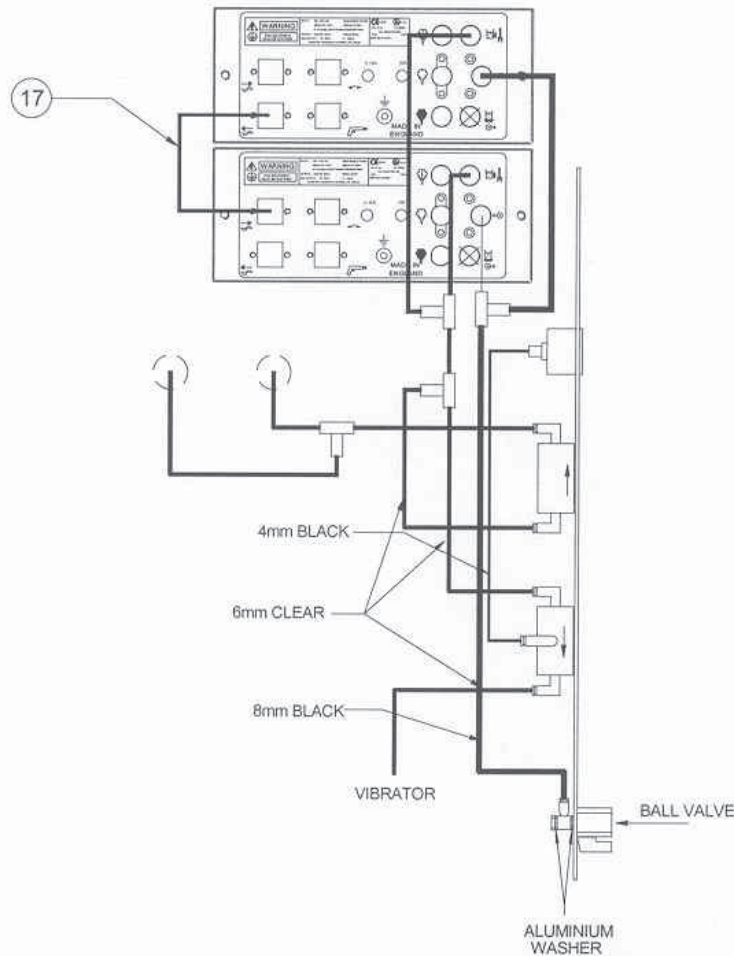


THIS VIEW IS SHOWN WITHOUT 2 GCU 400 FOR CLARITY



Double Boxfeed, Piping Diagram

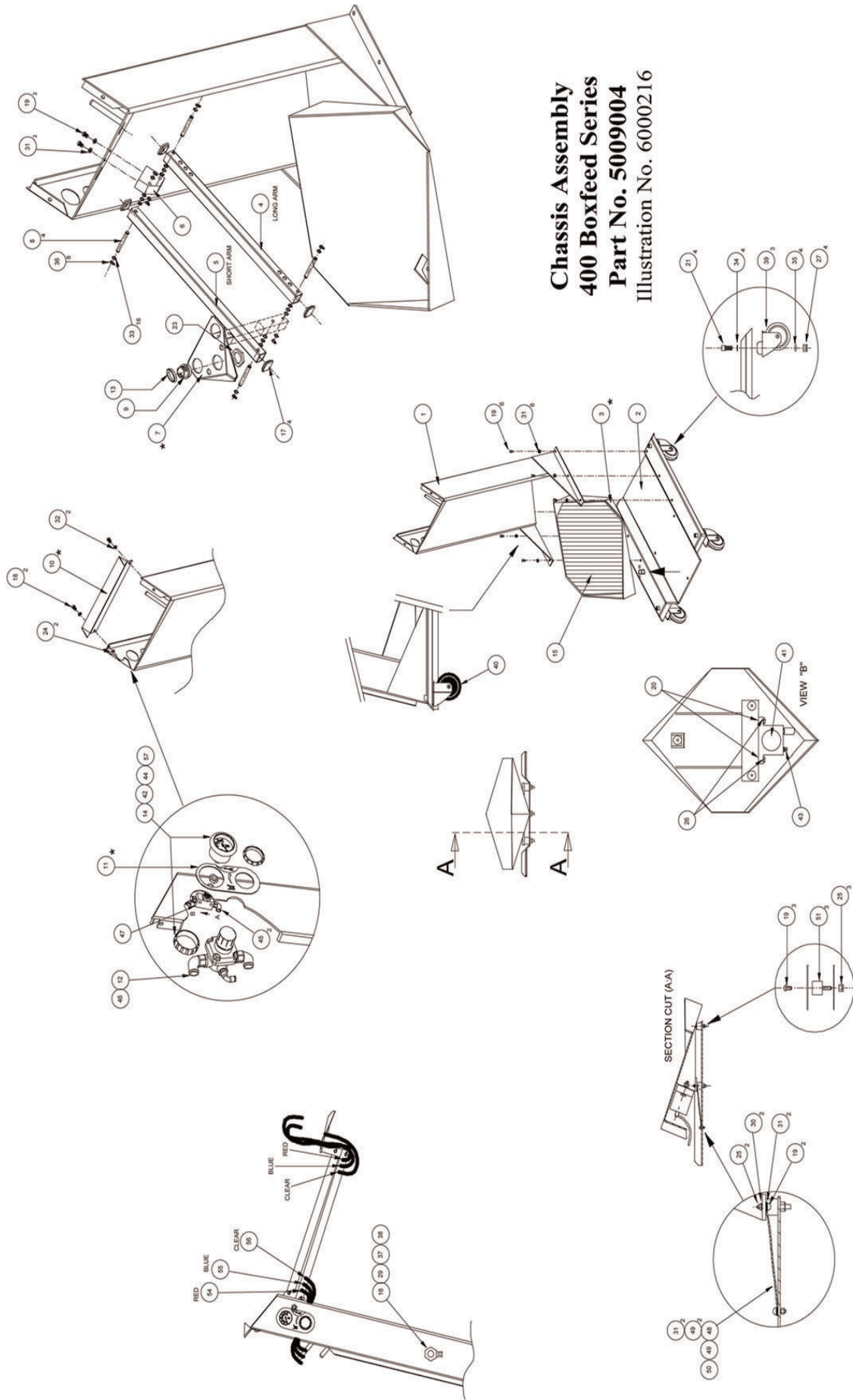
Illustration No. 6000215



400D Boxfeed Unit, Double Operator, General Assembly

Item	Part Number	Description	Quantity
1	2024002	Gun Control Unit - GCU 400	2
2	3019002	Manual Powder Gun - MG 400	2
3			
4	5009006	Suction Tube Assembly	2
5	5000043	Main Lead Assy, US/Japan	1
6	2095002	Venturi Assy, 400 Series	2
7	5009004	Chassis Assy, 400 Boxfeed	1
8	3019036	Hose & Cable Set, 5M	2
9	9001506	QD Air Fitting	2
10	9001507	QD Air Fitting	2
11	5009024	Gun Mounting Pillar	2
12	5009026	Mounting Bracket Left	1
13	5009027	Mounting Bracket Right (NS)	1
14	9000657	Screw, M6 x 10 Skt, Cap Head	2
15	9000840	Washer, M6, Crinkle	2
16	9001914	M5 Long Handle Allen Key	1
17	2001040	Main Interconnection Cable	1
18	7000001	M4 Allen Key (NS)	1
19	7000000	M3 Allen Key (NS)	1

(NS) - Not Shown on this illustration



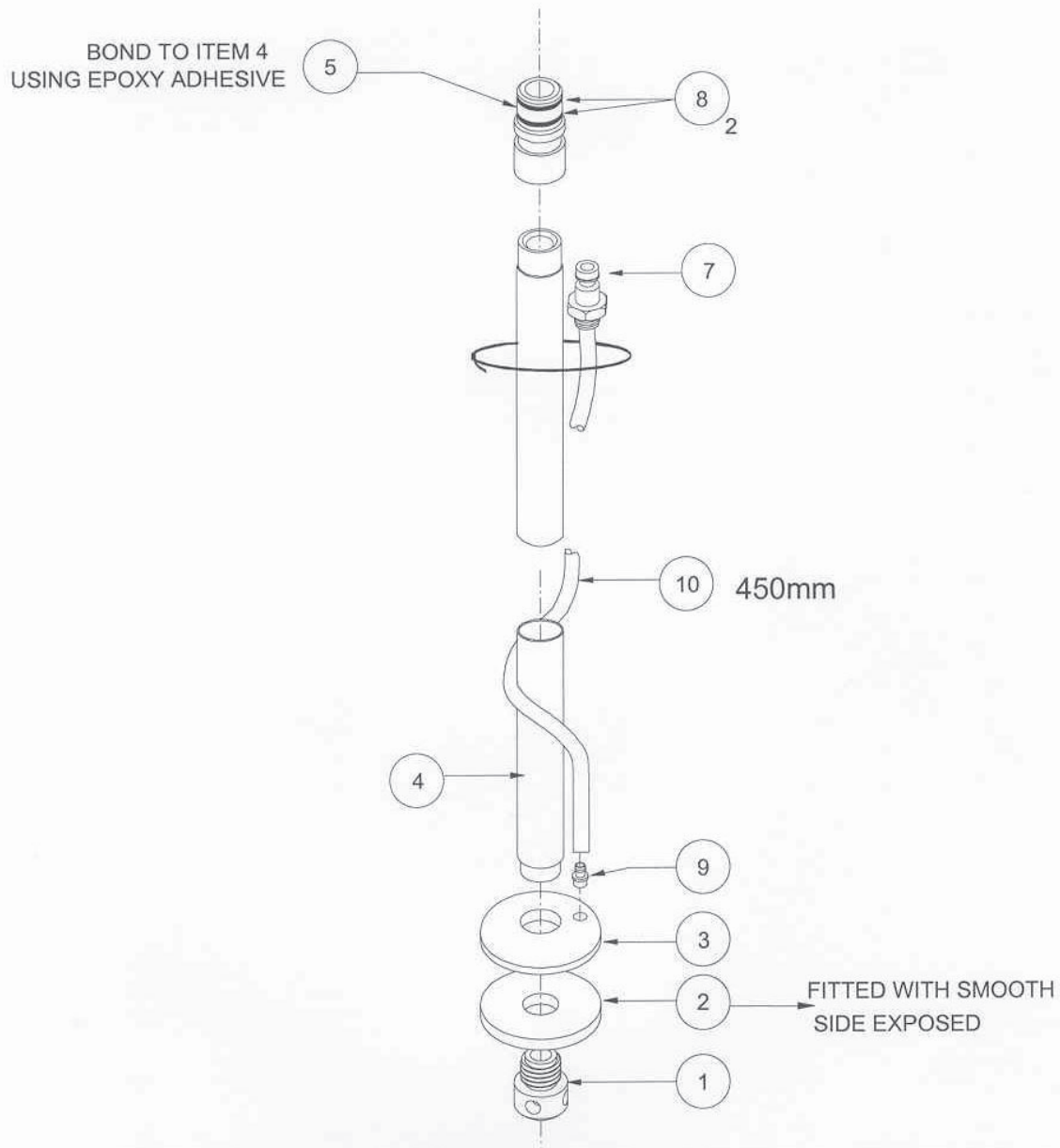
Chassis Assembly, 400 Series BoxFeed Unit Parts List

Item	Part Number	Description	Quantity
1	5009017	Box Column Support	1
2	5009023	Box Base	1
3	5009021	Box Plate	1
4	5009013	Boxfeed Long Arm	1
5	5009016	Boxfeed Short Arm	1
6	5009014	Pivot Block	1
7	5009018	Venturi Mounting Block	1
8	5009010	Pivot Pin, Boxfeed Arm	4
9	5009020	Lift Tube Mounting Spigot	1
10	5009022	Shelf	1
11	5009030	Regulator Overlay	1
12	5009007	Regulator Assembly	1
13	3019026	Latch Ring	1
14	5000040	Disc, Porous Plastic	1
15	5009029	Mat, Rubber	1
16	9001892	Ball Valve ¼ Mini	1
17	9001850	End Caps	4
18	9000603	Screw, M5 x 10 Skt. Btn. Hd. Blk. Zinc	2
19	9000650	Screw, M6 x 12 Skt. Btn. Hd. Blk. Zinc	13
20	9000701	Screw, M8 x 35 Hex. Hd. H.T. Stl. Blk	2
21	9000760	Screw, M10 x 30 Skt. Btn. Hd. Blk.	4
23	9000821	Lock Nut, ¾ BSP	1
24	9000809	Nut, M5 Nyloc	2
25	9000803	Nut, M6 Nyloc	5
26	9000812	Nut, M8 Nyloc	2
27	9000808	Nut, M10 Nyloc	4
29	9001887	Washer, Aluminum	3
30	9000840	Washer, M6,Crinkle, S/P	2
31	9000835	Washer M6 S/P	13
32	9000849	Washer M6 Plain Full	2
33	9000869	Washer M6 Plain Half	16
34	9000837	Washer M10. S/P	4
35	9000836	Washer M10 Plain	4
36	9001893	Circlip, External, 6mm	8
37	9001886	Banjo Bolt	1
38	9001888	Banjo Ring Piece	1
39	9000065	Castor, 75mm Dia. Rubber	3
40	9000064	Castor, 75mm Dia. Elec. Conductive Rubber	1
41	9001031	Vibrator, Turbine	1
42	9001879	Pressure Gauge,4 bar Panel Mtg,Screw Body	1
43	9000105	Straight 1/4 BSPMT 6mm OD Tube, PI	1
44	9000052	Straight 1/8 BSPFP 4mm OD Tube, PI	1
45	9001672	Elbow, M5 - 6mm OD Tube, PI	1
46	9000366	Tee, 6mm.Equal PI	1
47	9000363	Flow Regulator	1
48	9001064	Braid, Copper 30A	1
49	9001075	Eyelet, OBA	2
50	9000047	Sleeve Rubber, H15	2
51	9000355	Anti-Vibration Mount	3
54	9000168	Tubing, 6x 4 PU, Red	1 Mtr
55	9000169	Tubing, 6x 4 PU, Blue	1 Mtr
56	9000170	Tubing, 6x 4 PU, Clear	1 Mtr
57	9000203	Tubing, 6x 2.5 PU, Black	0.1 Mtr

Suction Tube Assembly

Product No. 5009006

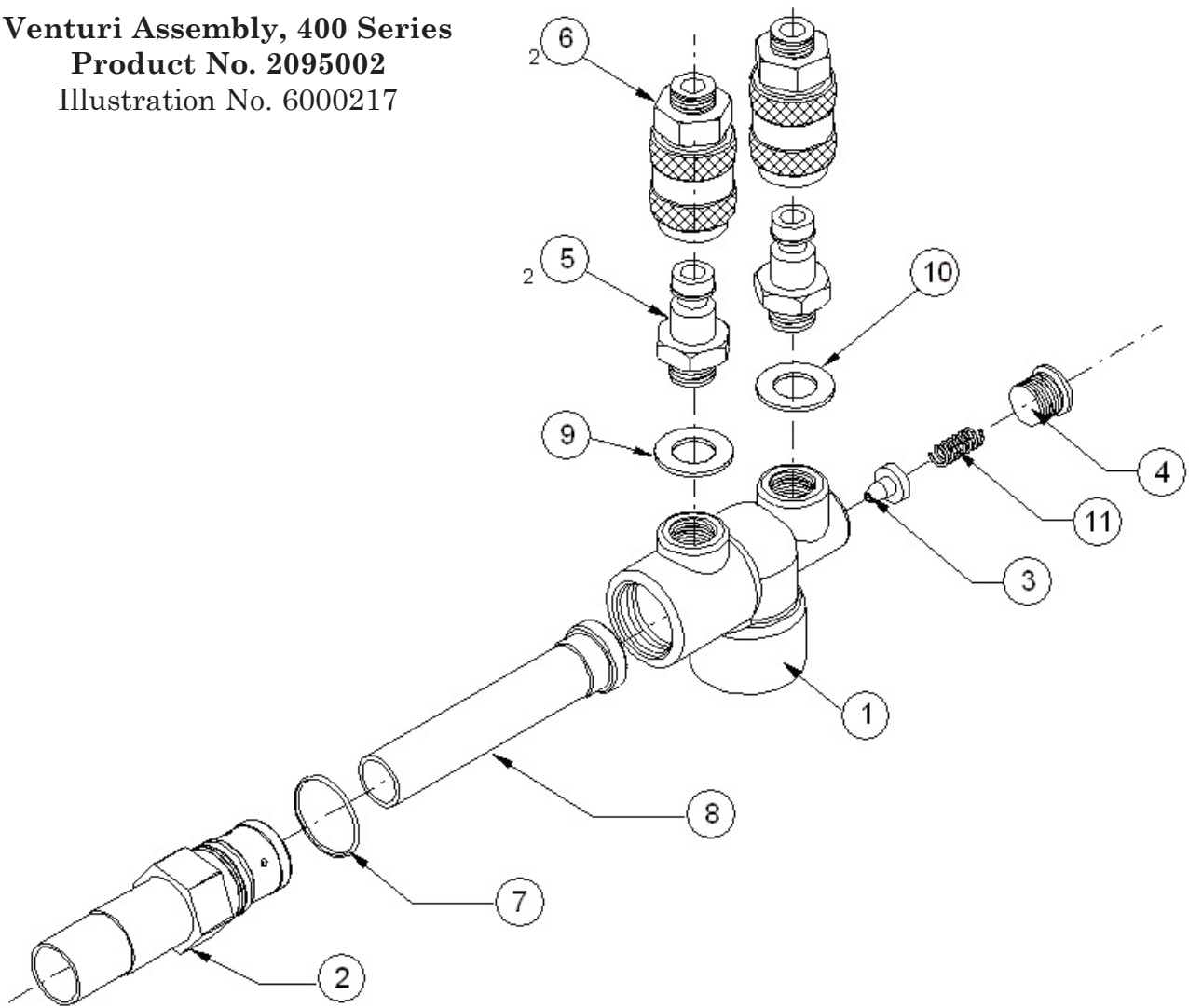
Illustration No. 6000218



Suction Tube Assembly - 400D, 400 Series, Parts List

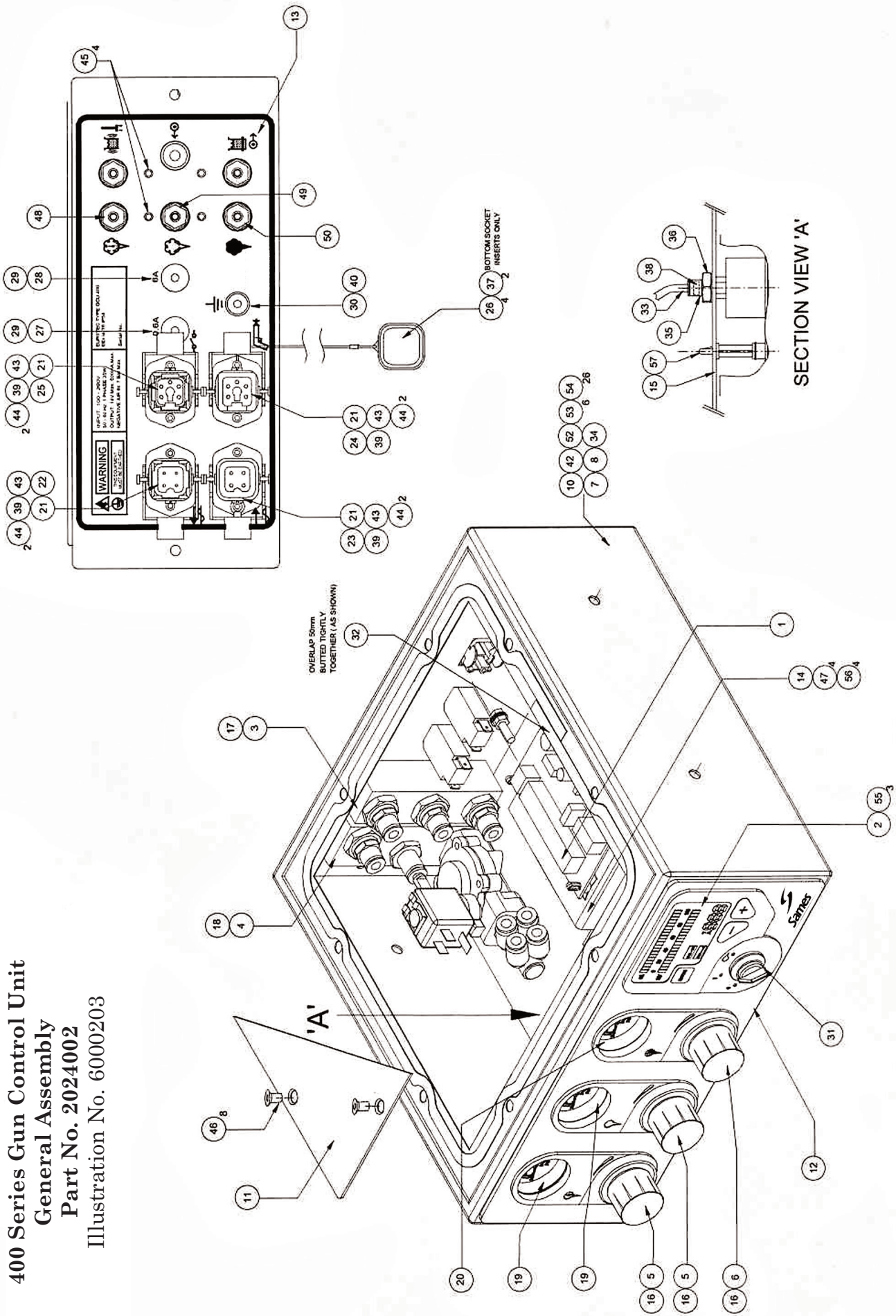
Item	Part Number	Description	Quantity
1	2070023	Induction Nozzle	1
2	2070025	Fluidizing Tile	1
3	2070024	Plenum Fluidizing Pad	1
4	5009028	Lift Tube	1
5	5009019	Venturi Lift Top	1
6			
7	9001507	Q.D Air Connector, Male	1
8	9001863	O-Ring 14 x 2, Silicone	2
9	9000077	Straight MS - 4mm Tail	1
10	9000084	Tubing 6mm OD x 4mm ID, Black	0.5Mtr

Venturi Assembly, 400 Series
Product No. 2095002
 Illustration No. 6000217



Venturi Assembly, 400 Series, Parts List			
Item	Part Number	Description	Quantity
1	2095010	Venturi Body	1
2	2090004	Venturi Tail, 12.5mm	1
3	2095013	Venturi Jet, Standard	1
4	9001874	Blank, 1/8 BSPMP, Hex, Skt	1
5	9001083	Plug, 1/8 BSP	2
6	9000272	Quick Release Air Fitting, Male	2
7	9001861	O-Ring, 15 x 1mm, Silicone	1
8	2090036	Insert, High Output	1
9	9000854	Washer, 1/8 BSP, Blue Nylon	1
10	9000853	Washer, 1/8 BSP, Red Nylon	1
11	9001855	Spring, Compression, Venturi Jet	1

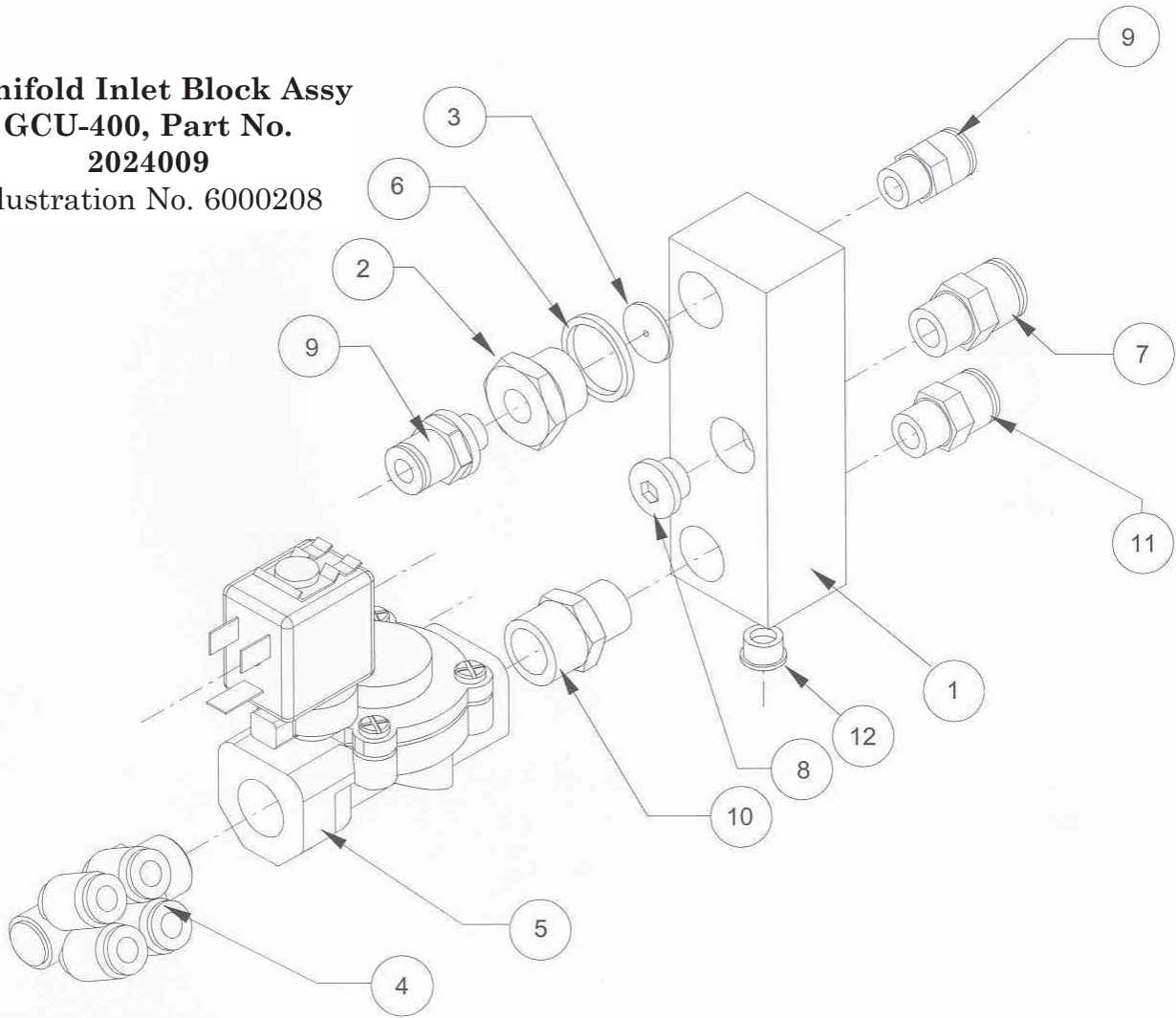
400 Series Gun Control Unit
General Assembly
Part No. 2024002
Illustration No. 6000203



400 Series Gun Control Unit General Assembly Parts List

Item	Part Number	Description	Quantity
1	2024006	Control PCB	1
2	2024005	Display PCB	1
3	2024021	Manifold, Outlet Block Assy	1
4	2024009	Manifold, Inlet Block Assy	1
5	2000026	Pressure Regulator Assy, 2 Bar	2
6	2010018	Pressure Regulator Assy, 4 Bar	1
7	2024007	Wiring Loom, Main, GCU 400	1
8	2024008	Wiring Loom, Low Voltage	1
10	2024010	Control Box Detail Type, GCU 400	1
11	2024011	Cover, GCU 400	1
12	2024012	Front Panel Overlay, GCU 400	1
13	2024013	Rear Panel Overlay, GCU 400	1
14	2024014	Chassis, 400 PSU/PCB	1
15	2024016	Gauge Support Plate	1
16	2024015	Spacer, Regulator	1
17	2020061	Gasket, Manifold Outlet	1
18	2020060	Gasket, Manifold Inlet	1
19	2024019	Pressure Gauge 30PSI / 2 Bar	2
20	2024020	Pressure Gauge 60PSI / 4 Bar	1
21	9000120	Connector Base, Panel Mounting	4
22	9000011	Connector Plug Insert, 3 pin + E	1
23	9000012	Connector Socket Insert, 3 pin + E	1
24	9000013	Connector Socket Insert, 4 pin + E	1
25	9000135	Connector Plug Insert, 4 pin + E	1
26	9000014	Connector, Protective Cover	4
27	9000016A	0.6A Circuit Breaker	1
28	9000018A	6A Circuit Breaker	1
29	9000019A	Circuit Breaker Boot	2
30	9000021	Terminal, Earth Post	1
31	9001322	Switch, Rotary, 2 Pole, 3 Position	1
32	9001785	Seal Strip, Foam, Self Adhesive, 15 x 3mm	1Mtr
33	9000203	Tubing, 4mm OD x 2.5mm ID PU, Black	0.4Mtr
34	9001843	Nylon Airline, 6mm	3Mtr
35	9000052	Straight, 1/8BSPFP - 4mm OD Tube PI	3
36	9000806	Lock Nut, 1/8 BSP Brass	3
37	2020059	Gasket, Connector Cover	2
38	5000040	Disc, Porous Plastic	6
39	9000832	Washer, M3, Crinkle	4
40	9000862	Washer, M5 Ext. S/P	1
41	9000861	Washer, M3 Int, S/P	4
42	9000650	Screw, M6 x 8, Skt, Btn Hd, Black	4
43	9000501	Screw, M3 x 6, St. Stl, Pan Hd	4
44	9000500	Screw, M3 x 8, Skt, Cap, Black	8
45	9000551	Screw, M4 x 8, Skt, Btn Hd, Black	4
46	9000600	Screw, M5 x 6, Skt, Csk Hd, Black	8
47	9000801	Nut, M4 Nyloc	5
48	9000855	Washer, 1/8BSP, Nylon, Black	1
49	9000854	Washer, 1/8BSP, Nylon, Blue	1
50	9000853	Washer, 1/8BSP, Nylon, Red	1
52	9000205	Label, Warning, Disconnect Main	1
53	9000008	Cable Ties Base, Self Adhesive	6
54	9000022	Cable Ties, 2.5mm x 100mm	26
55	9001849	PCB Pillars, Display Board, 9.5mm	4
56	9001847	PCB Pillars, Control Unit, 6.4mm	4
57	9001848	PCB Pillars, Gauge Support Plate, 22.2mm	4
58	9001882	Power Supply, 400 Series	1
59	9001897	Cable Clip	1
60	9001898	M3 Nut Plastic	3
61	9001547	Mounting Blades, 45°, 0.25", PCB	1
62	9000037	Blank, 6mm OD, PI	1

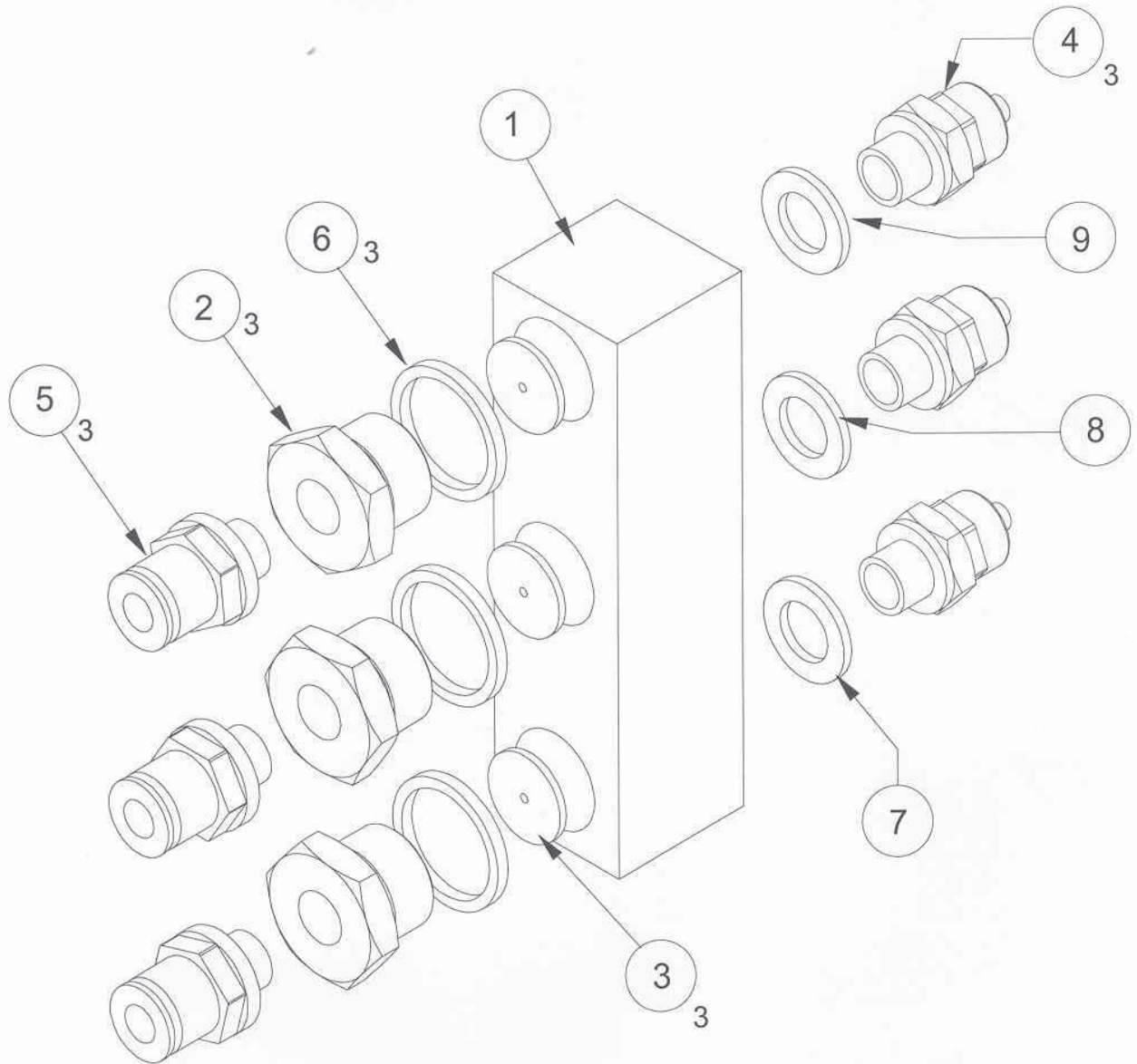
Manifold Inlet Block Assy
GCU-400, Part No.
2024009
 Illustration No. 6000208



Manifold Inlet Block Assy, Parts List

Item	Part Number	Description	Quantity
1	2000019	Manifold Inlet Block Detail	
2	2000031	Valve, Non-Return	
3	2000037	Seal, Non-Return	
4	9001746	Banjo 3/8 - 6mm QD	
5	9000038	Valve, Solenoid, 2-2 3/8BSP 24V DC	
6	9000042	Washer, Sealing, 3/8BSP, Nylon	
7	9000030	Straight, 1/4BSPMT 8mm OD Tube, PI	
8	9001880	Blank, 1/4 BSPMP	
9	9000041	Straight, 1/8BSPMT 6mm OD Tube, PI	
10	9000032	Straight 1/4BSPMT, 3/8BSPMT	
11	9000105	Straight 1/4BSPMT 6mm OD Tube, PI	
12	9001874	Blank, 1/8BSPMP, Hex, Skt	

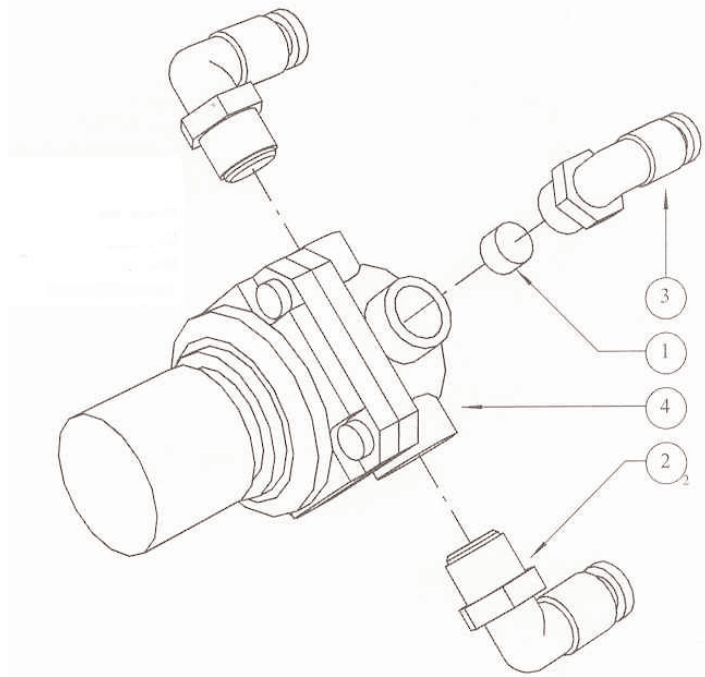
Manifold Outlet Block Assy
GCU-400, Part No. 2024021
 Illustration No. 6000211



Manifold Outlet Block Assy, Parts List

Item	Part Number	Description	Quantity
1	2000018	Manifold Outlet Block	
2	2000031	Valve, Non Return	
3	2000037	Seal, Non Return Valve	
4	9001045	Straight, 1/8BSP -6mm OD Tube Rapid, Metal I	
5	9000041	Straight, 1/8BSPMP 6mm OD Tube PI	
6	9000042	Washer, Sealing, 3/8BSP, Nylon	
7	9000853	Washer, 1/8BSP Nylon, Red	
8	9000854	Washer, 1/8BSP Nylon, Blue	
9	9000855	Washer, 1/8BSP Nylon, Black	

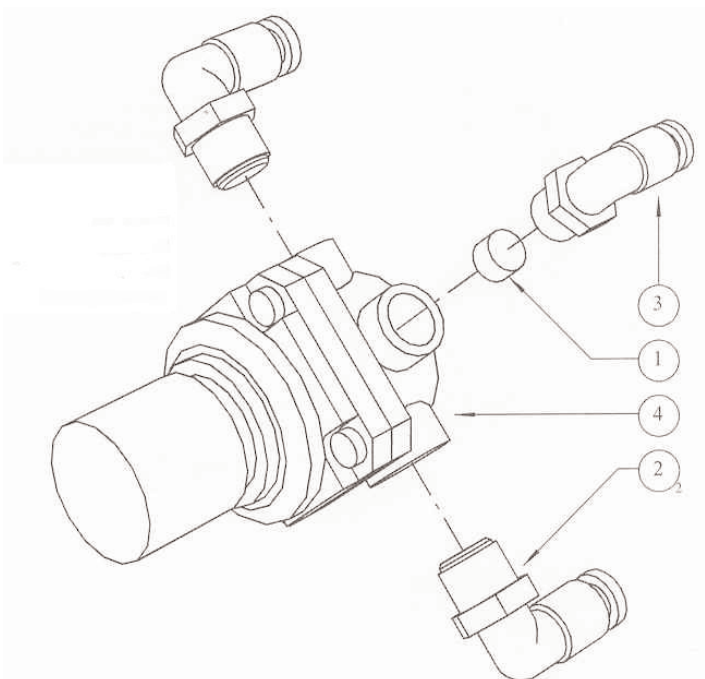
Pressure Regulator Assy 4 Bar
Part No. 2010018
 Illustration No. 6000091



Pressure Regulator Assy 4 Bar, Parts List

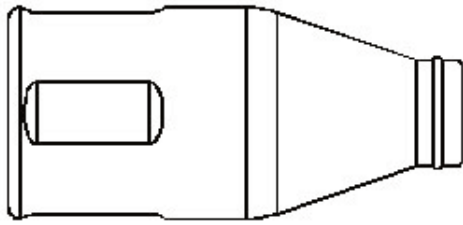
Item	Part Number	Description	Quantity
1	5000050	Disc Porous Plastic 8 x 3.2Thk	
2	9000033	Elbow, 1/4BSPMT 6mm OD Short PI	
3	9000062	Elbow, 1/8BSPMT 4mm OD Short PI	
4	9000112	Pressure Regulator, 4 Bar	

Pressure Regulator Assy 2 Bar
Part No. 2000026
 Illustration No. 6000090

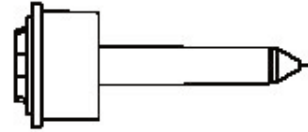
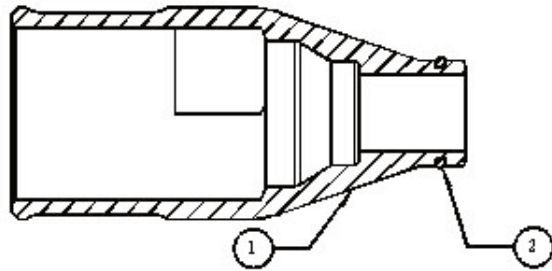


Pressure Regulator Assy 2 Bar, Parts List

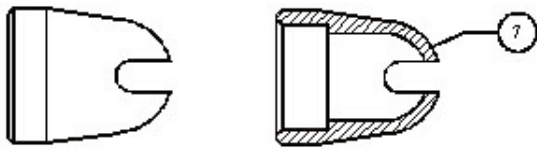
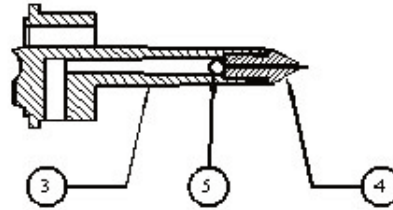
Item	Part Number	Description	Quantity
1	5000050	Disc Porous Plastic 8 x 3.2Thk	
2	9000033	Elbow, 1/4BSPMT 6mm OD Short PI	
3	9000062	Elbow, 1/8BSPMT 4mm OD Short PI	
4	9000111	Pressure Regulator, 2 Bar	



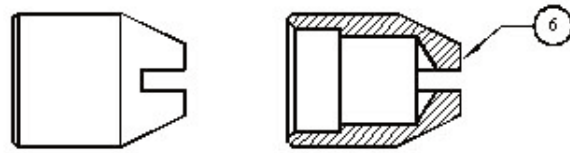
NOZZLE NUT, Pt. No. 3019013



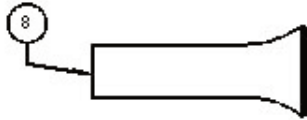
ELECTRODE ASSEMBLY Pt. No. 3016185



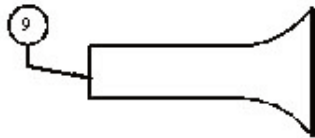
SLOTTED CAP - 6mm, Pt. No. 3019017



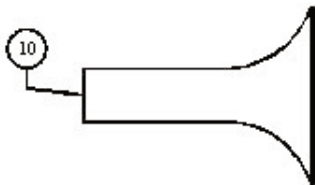
SLOTTED CAP - 4mm Pt. No. 3022019



STEM DEFLECTOR, SMALL Pt. No. 3016200



STEM DEFLECTOR, MEDIUM Pt. No. 3016201

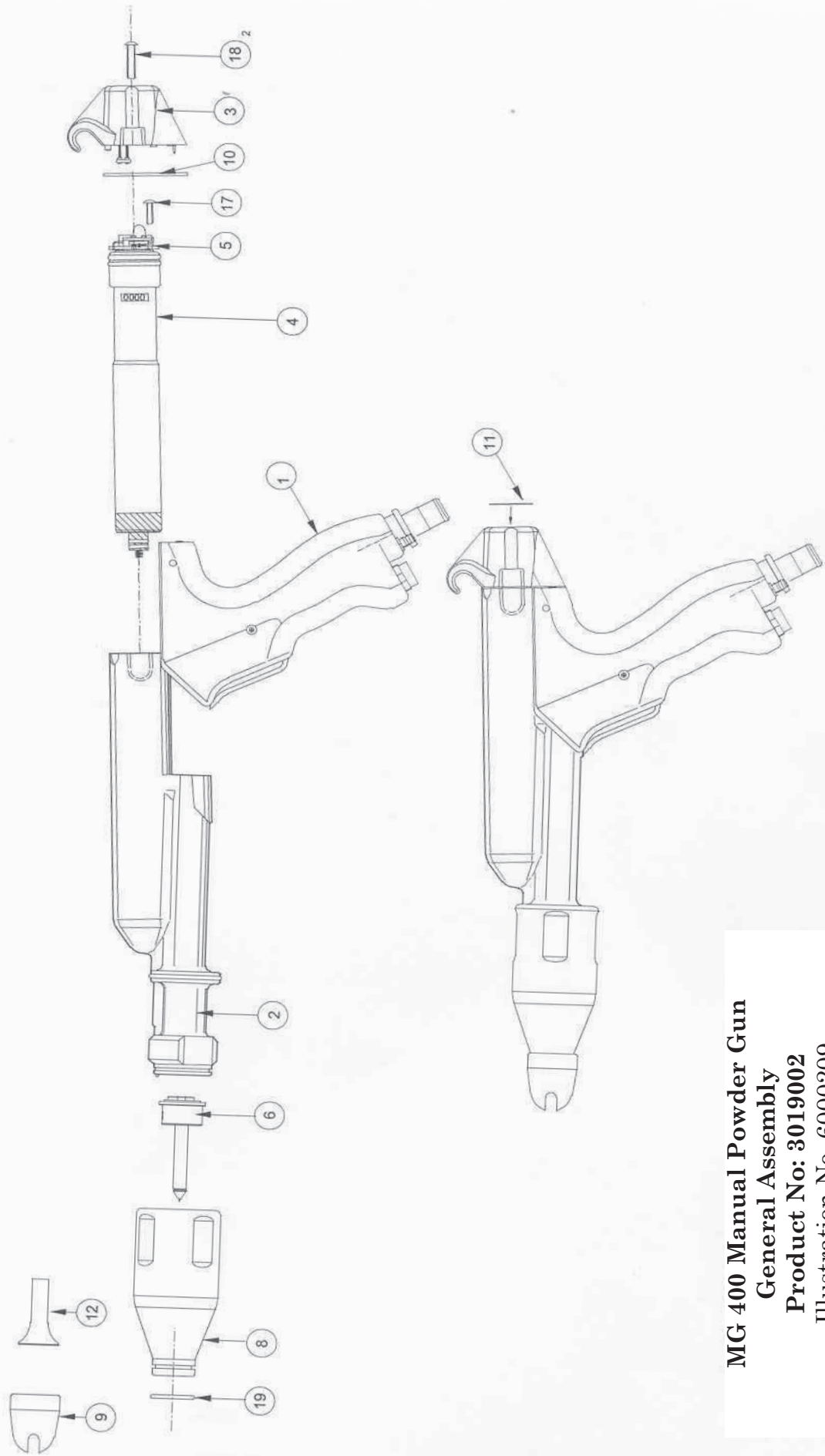


STEM DEFLECTOR, LARGE Pt. No. 3016202

Nozzle Components for Manual Gun
Illustration No. 6000202

Nozzle Components for Manual Gun, Parts List

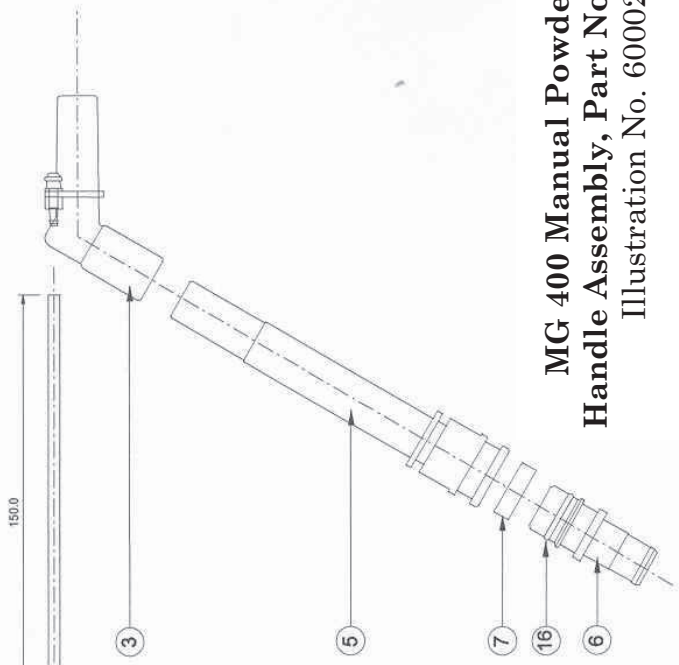
Item	Part Number	Description	Quantity
1	3019013	Nozzle Nut	1
2	9001856	O-Ring	1
3	3016158	Moulded Electrode Body	1
4	3016171	Electrode Support (Tip)	1
5	3016172	Electrode	1
6	3022019	Slotted Cap - 4mm	1
7	3019017	Slotted Cap - 6mm	1
8	3016200	Deflector - Small	1
9	3016201	Deflector - Medium	1
10	3016202	Deflector - Large	1



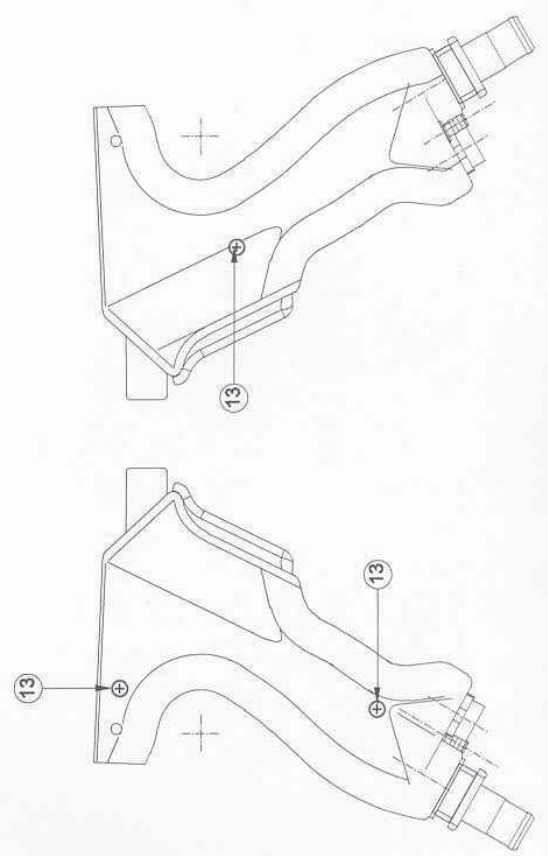
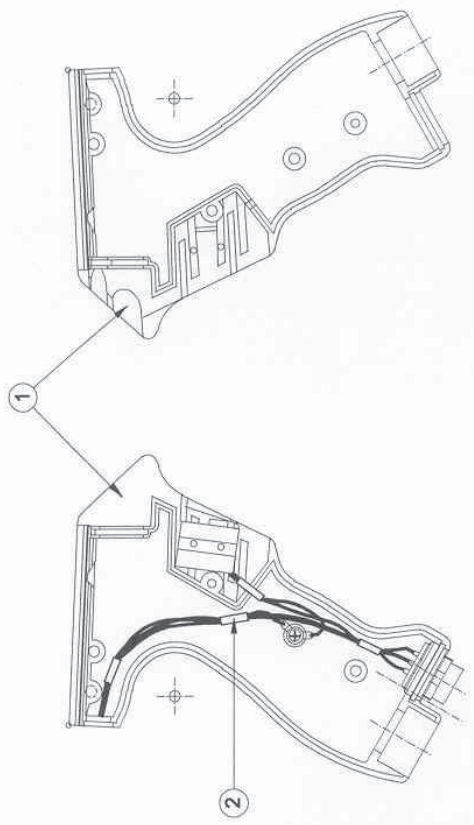
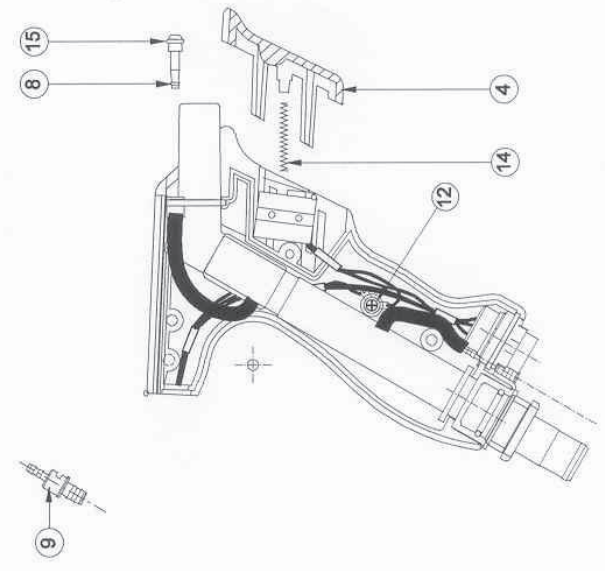
MG 400 Manual Powder Gun
General Assembly
Product No: 3019002
Illustration No. 6000209

MG 400 Manual Powder Gun, General Assembly Parts List

Item	Part Number	Description	Quantity
1	3019004	Handle Assy, MG400	1
2	3019005	Barrel Assy, AG/MG 400	1
3	3019006	Rear Cap Assy, MG 400	1
4	3019007	HV Multiplier Assy, AG/MG 400	1
5	3019008	Oscillator Assy, AG/MG 400	1
6	3016185	Electrode Assembly	1
7			
8	3019013	Nozzle Nut, AG/MG 400	1
9	3019017	Slotted Cap, AG/MG 400	1
10	3019020	Gasket, MG400	1
11	3019040	Label Rating, MG 400	1
12	3016201	Medium Stem Spreader	1
13			
14			
15			
16			
17	9000511	Screw, M3 x 12, Button Head Sems	1
18	9000578	Screw, M4 x 20 Hex, Skt, T/Proof, Pan HD	2
19	9001856	O-Ring, BS018, Silicone	1

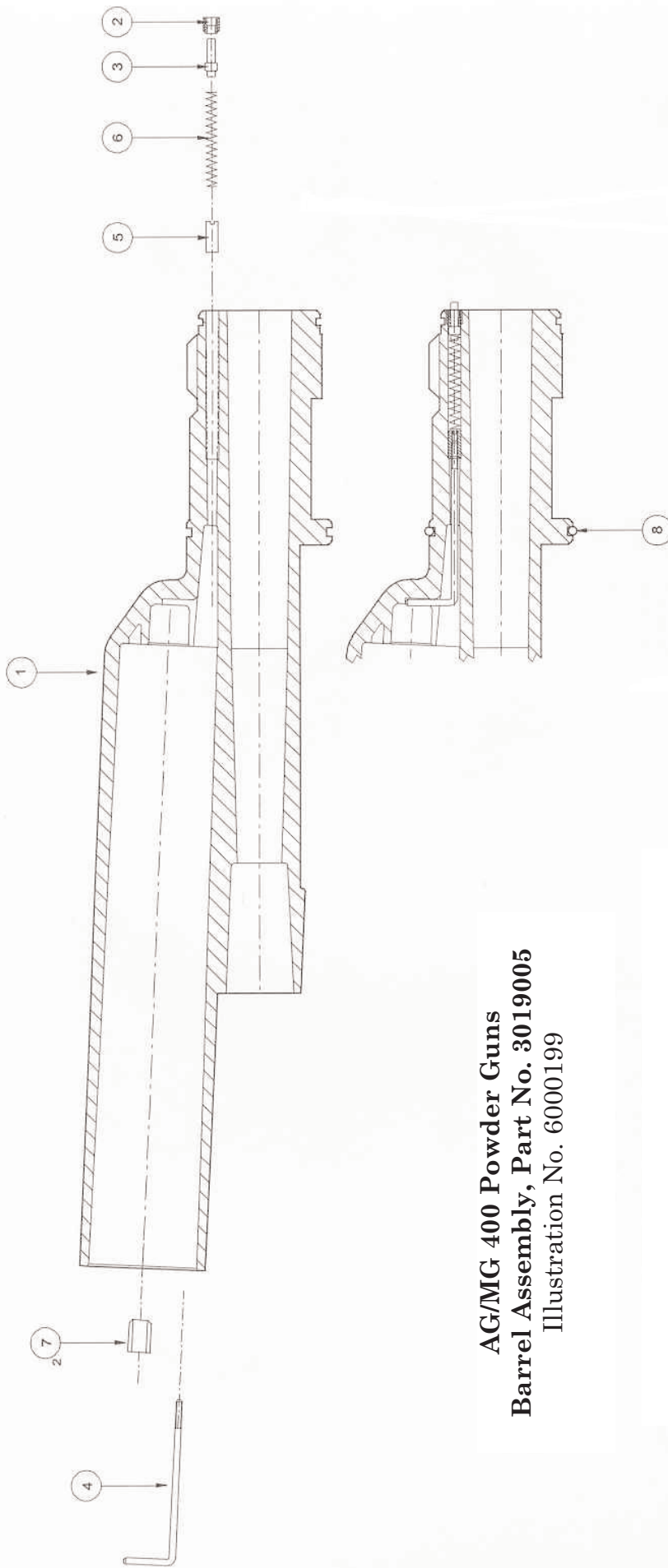


**MG 400 Manual Powder Gun
Handle Assembly, Part No. 3019004
Illustration No. 6000210**



MG 400 Manual Powder Gun Handle Assembly Parts List

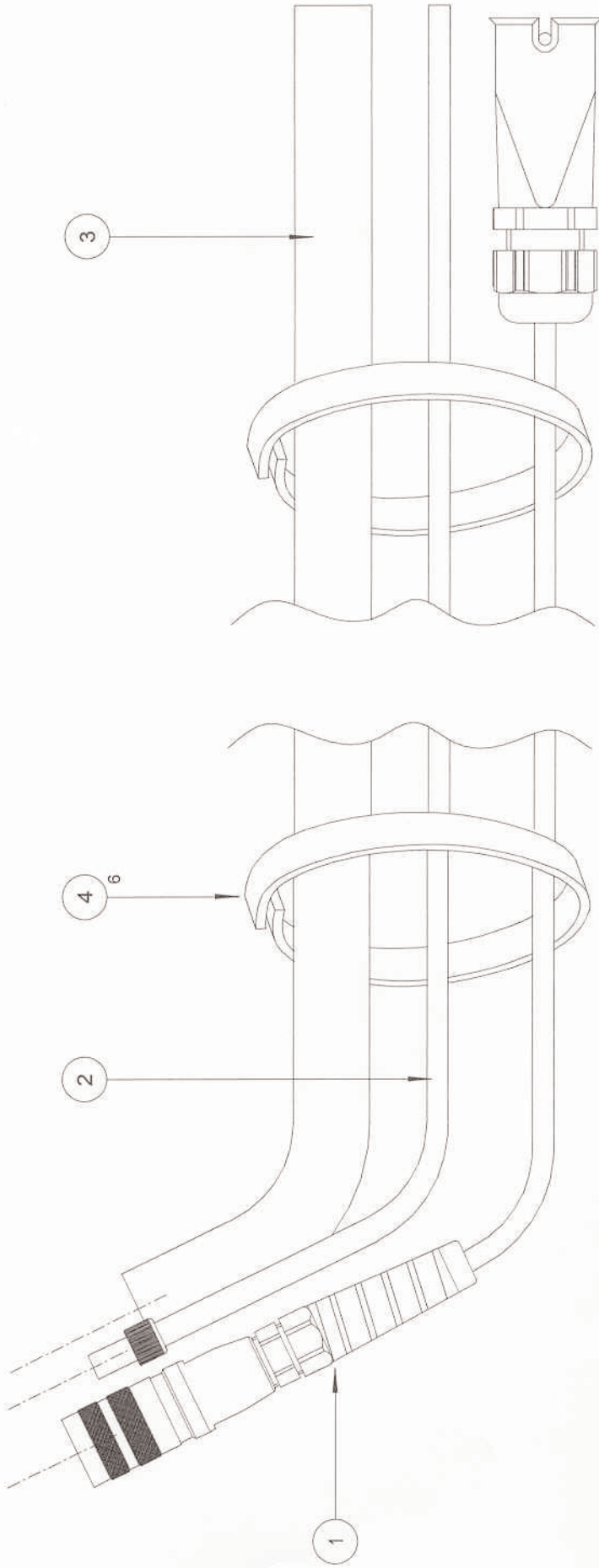
Item	Part Number	Description	Quantity
1	3019033	Handle, Sub Assy, MG 400	1
2	3019009	Wiring Assy, MG 400	1
3	3019011	Elbow, MG 400	1
4	3019012	Trigger, MG 400	1
5	3019024	Powder Tube, MG 400	1
6	3019025	Powder Tail, MG 400	1
7	3019026	Latch Ring, AG/MG 400	1
8	3019027	Air Connector, Barrel, AG/MG 400	1
9	3019028	Air Connector, Handle, MG 400	1
12	9000501	Screw, M3 x 6 Pan HD	1
13	9000513	Screw, M3 x 20 Pozi, HD	3
14	9001853	Spring, Compression, Trigger	2
15	9001860	O-Ring, 3 x 1 Silicone	1
16	9001863	O-Ring, 14 x 2 Silicone	1
17	9000203	Tubing, 4mm OD x 2.5mm ID, PU	0.15M



AG/MG 400 Powder Guns
 Barrel Assembly, Part No. 3019005
 Illustration No. 6000199

AG/MG 400 Powder Guns, Parts List

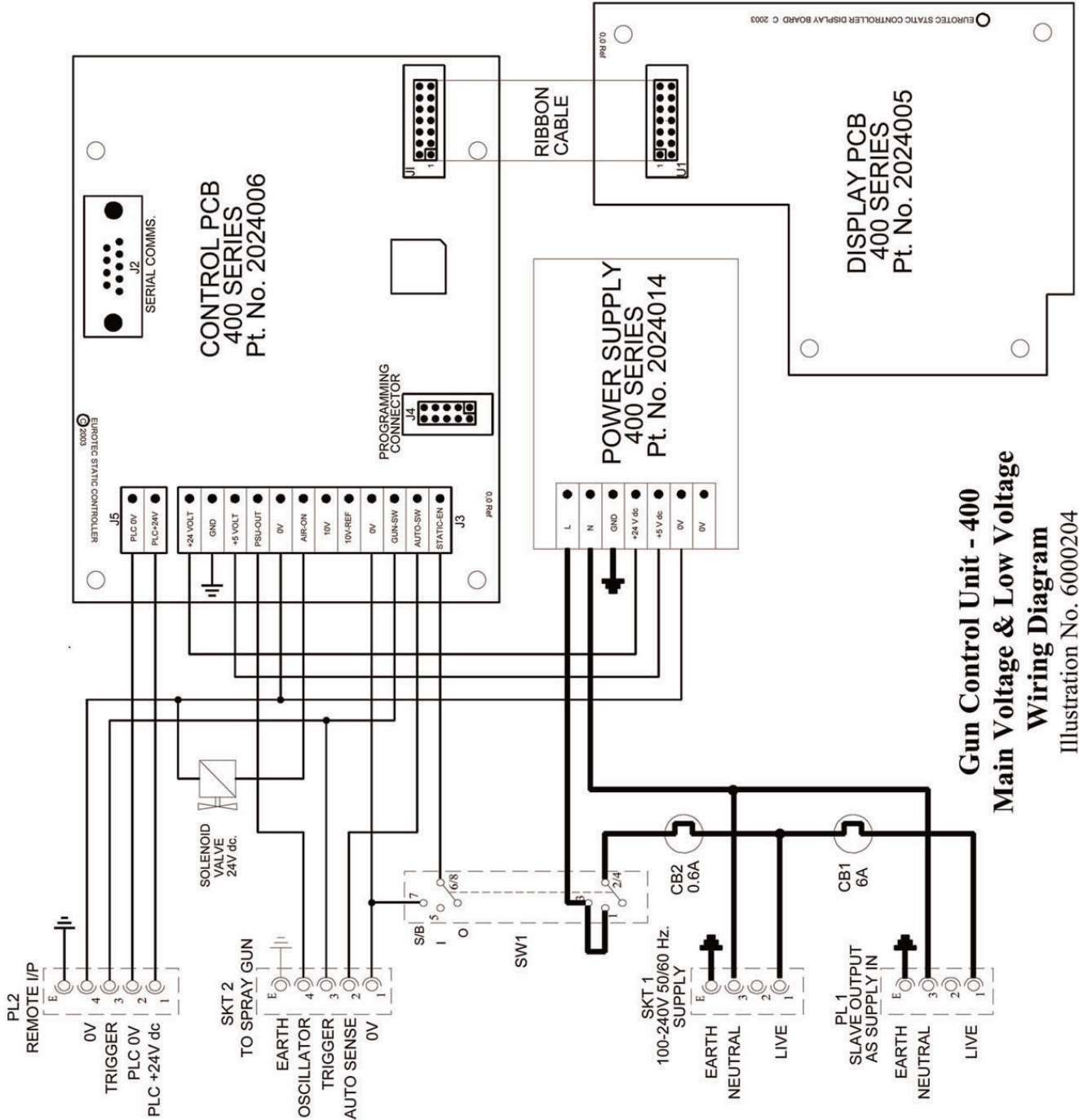
Item	Part Number	Description	Quantity
1	3019010	Barrel, AG/MG 400	1
2	3016013	HT Pin Retaining Screw	1
3	3015024	HT Contact Pin	1
4	3016038	HT Contact Rod	1
5	3016039	HT Contact Nut	1
6	9001852	Spring Compression	1
7	9001435	M4 Threaded Insert, Brass	1
8	9001858	O-Ring, BS 022, Silicone	1
9	9001856	O-Ring, 22 x 2.5mm, Silicone	1



5m Hose & Cable Set General Assembly
Product No. 3019036
 Illustration No. 6000199

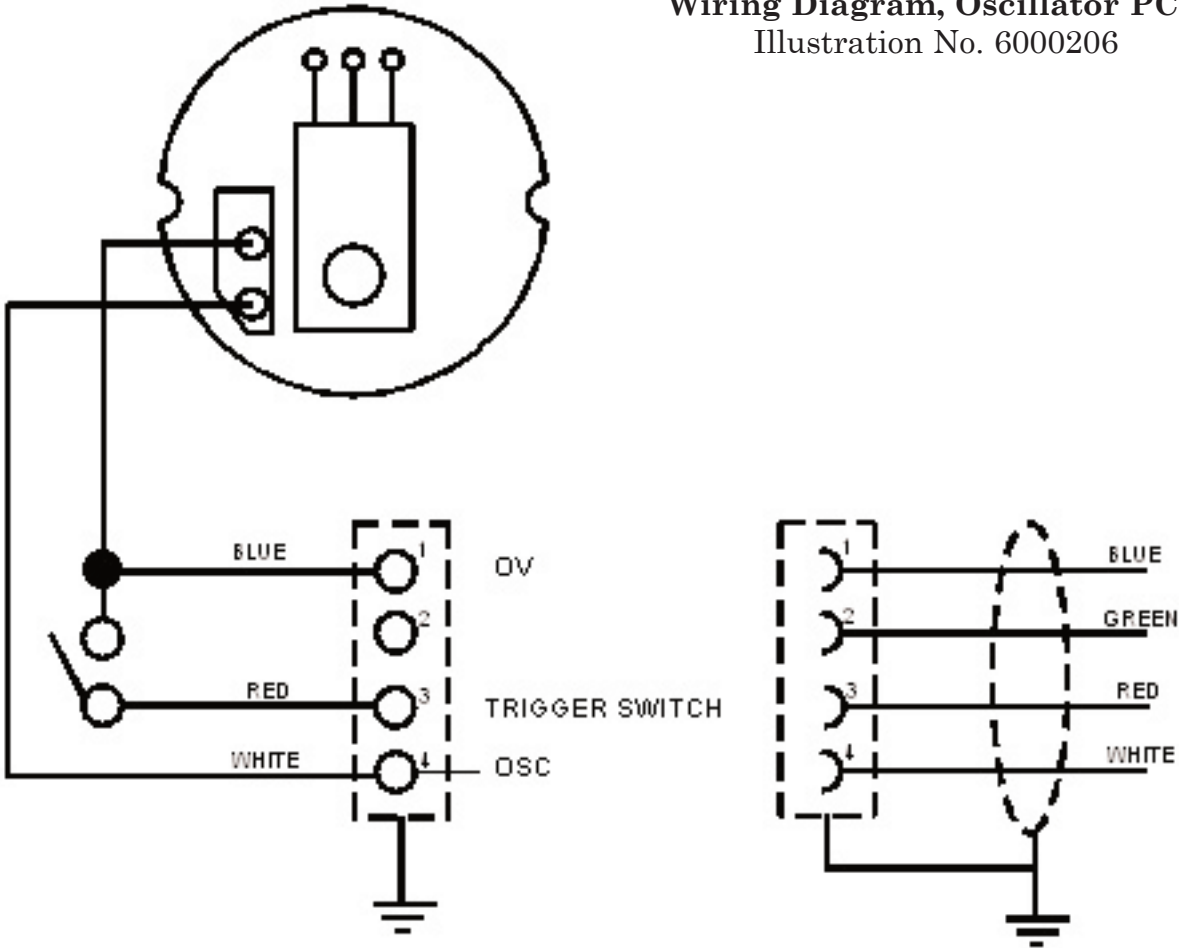
AG/MG 400 Powder Guns, Parts List

Item	Part Number	Description	Quantity
1	3016046	Cable Assembly	
2	9000084	Tubing, 6mm OD x 4mm ID, PU, Black	
3	9001220	Powder Hose Clear, per meter	
4	9000256	Velcro, Double Sided	






Gun Control Unit - 400
Main Voltage & Low Voltage
Wiring Diagram
 Illustration No. 6000204

Manual Powder Gun
Wiring Diagram, Oscillator PCB
Illustration No. 6000206



Fluidbed (H) 400
Sira Warning Labels
 Illustration No. 6000228

	WARNING	INPUT:- 100 - 240 VAC 50/60 SINGLE PHASE 400mA AT 115V 200mA AT 230V 45 VA (FULL LOAD POWER CONSUMPTION)	 0518  II 2 D EEx 2 mJ EN 50050 Sira 03ATEX5416X
	THIS EQUIPMENT MUST BE EARTHED		

GCU 400 – Referred to
 Drawing No 2024002.
 Page No. 36

FLUID BED UNIT

 **0518**  **II (2) D**
EEx 2 mJ
EN 50050
 Sira 03ATEX5416X

MODEL No. 400H
 PART No. 5008002
 SERIAL No. _____

COMPRISING THE FOLLOWING:-

GCU400 CONTROL UNIT	P/N 2024002
FLUID BED ASSEMBLY	P/N 5008003
CHASSIS ASSEMBLY	P/N 5008004

Hopper Feed Assembly 400H – Referred to
 Drawing No 5008002
 Page No. 23

MG400

Serial / Year
 Part No: 3019002



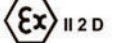
Sira 03ATEX5416X
EEx 2 mJ EN 50050

 **0518**  **II 2 D**

IP54 **OUTPUT T 50°C**
85kV (-ve) Max
100 uA Max
 Exel Industrial (UK) Ltd.
 Wigan, UK

Manual Powder Gun 400 – Referred to
 Drawing No 3019002
 Page No. 44

Boxfeed (D) 400
Sira Warning Labels
 Illustration No. 6000227

	WARNING	INPUT:- 100 - 240 VAC 50/60 SINGLE PHASE 400mA AT 115V 200mA AT 230V 45 VA (FULL LOAD POWER CONSUMPTION)	 
	THIS EQUIPMENT MUST BE EARTHED		

GCU 400 – Referred to
 Drawing No 2024002.
 Page No. 33

BOX FEED UNIT




EEx 2 mJ
 EN 50050
 Sira 03ATEX5416X

MODEL No. 400D
 PART No. 5009002
 SERIAL No. _____

COMPRISING THE FOLLOWING:-
 GCU400 CONTROL UNIT P/N 2024002
 CHASSIS ASSEMBLY P/N 5009004

Boxfeed Assembly 400 – Referred to
 Drawing No 5009002
 Page No. 23

MG400

Serial / Year _____
 Part No: 3019002

Sira 03ATEX5416X
 EEx 2 mJ EN 50050




IP54 OUTPUT T 50°C
 85kV (-ve) Max
 100 uA Max
 Exel Industrial (UK) Ltd.
 Wigan, UK

Manual Powder Gun 400 – Referred to
 Drawing No 3019002
 Page No. 42

Sames E-Series Spare Parts Kits

400H Spare Parts Kit - Part # 668-668-566

400H Manual Hopper Feed Unit Spare Parts Kit (Parts List)			
Item	Part Number	Description	Quantity
1	3016185	Electrode Assembly	1
2	3019017	Slotted Cap, AG/MG 400	1
3	3016201	Medium Stem Spreader	1
4	3019011	Elbow, MG400	1
5	9001220	Hose, powder clear-per meter	5
6	9001863	O-ring 12 x 2, silicone	2
7	3019026	Latch Ring	4
8	9001861	O-ring, 15 x 1mm, silicone	2
9	2090036	Insert high output	1
10	2095013	Venturi Jet, Standard	1

400D Spare Parts Kit - Part # 668-668-567

400D Manual Box Feed Unit Spare Parts Kit (Parts List)			
Item	Part Number	Description	Quantity
1	3016185	Electrode Assembly	1
2	3019017	Slotted Cap, AG/MG 400	1
3	3016201	Medium Stem Spreader	1
4	3019011	Elbow, MG400	1
5	9001220	Hose, powder clear-per meter	5
6	9001863	O-ring 12 x 2, silicone	2
7	2070025	Fluidizing Tile	1
8	3019026	Latch Ring	4
9	9001861	O-ring, 15 x 1mm, silicone	2
10	2090036	Insert high output	1
11	2095013	Venturi Jet, Standard	1

EXEL[®]



PEOPLE

- Service
- Solutions

PRODUCTS

- Quality
- Innovation
- Performance

EXEL INDUSTRIAL, INC.

Manufacturer of Kremlin, Sames, & Rexson Products
1310 Washington Street, West Chicago, IL 60185
Phone: 800-573-5554 • Fax: 800-664-1511
Website: www.exelind.com

EXEL INDUSTRIAL CANADA, INC.

Manufacturer of Kremlin, Sames, & Rexson Products
931 Progress Ave., Unit 7, Scarborough, ON M1G 3V5
Phone: 800-450-0655 • Fax: 416-431-9171
Website: www.exelind.com
