

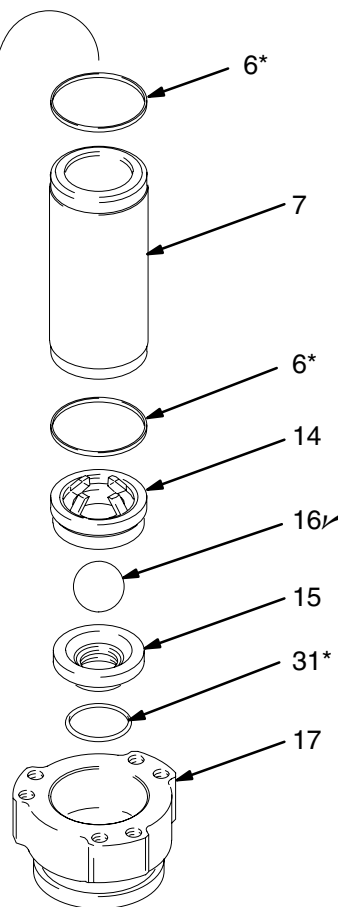
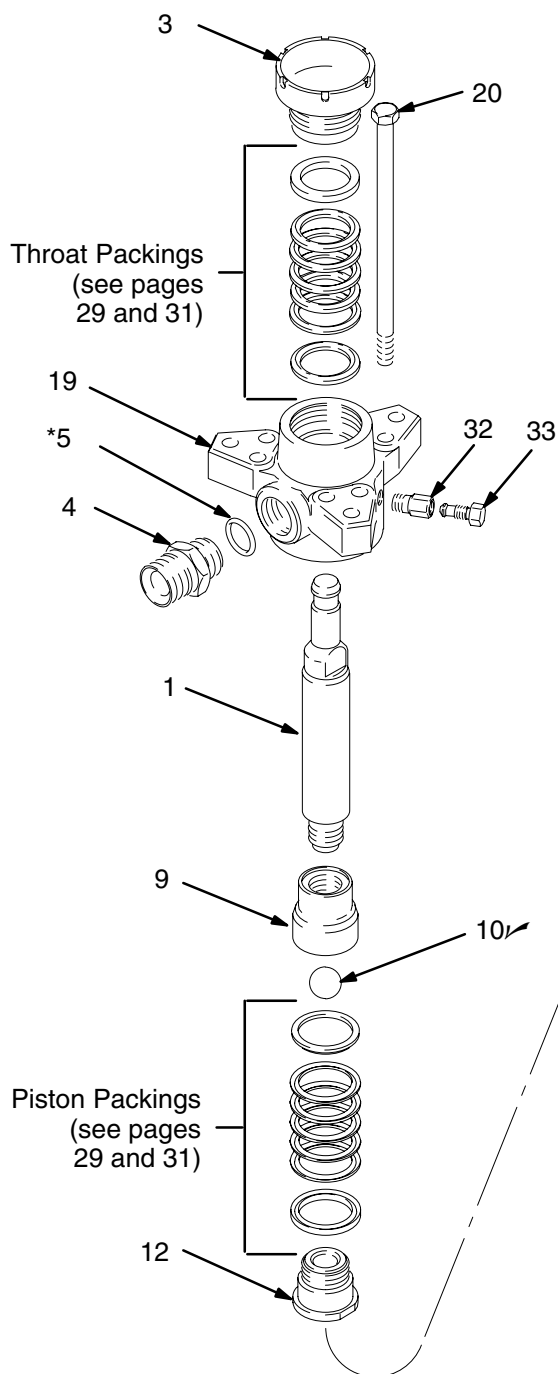
Parts

NOTE: The parts listed on this page are common to all displacement pumps covered in this manual. Refer to pages 29 and 31 for the different packing configurations available.

* These parts are included in Packing Repair Kit 222879, which may be purchased separately for standard Displacement Pump 222801. They are also included in the optional packing conversion kits listed on pages 29 and 31.

✓ Keep these spare parts on hand to reduce down time.

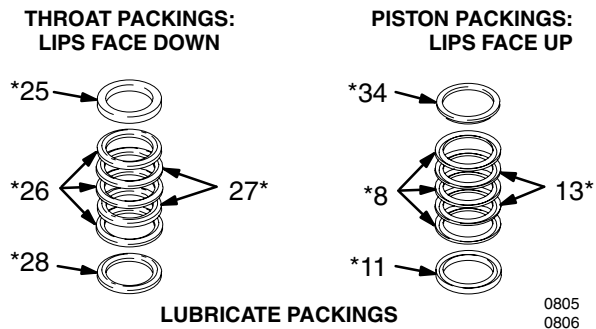
Ref No.	Part No.	Description	Qty
1	184002	ROD, displacement; stainless steel	1
3	184006	PACKING NUT/WET-CUP; carbon steel	1
4	184279	FITTING, outlet; 1-1/2 in. npt(m) x M42 x 20	1
5*	109213	O-RING; PTFE	1
6*	184072	SEAL; Delrin®	2
7	184003	CYLINDER; stainless steel	1
9	184297	GUIDE, ball, piston; stainless steel	1
10✓	108001	BALL, piston; stainless steel; 1.5 in. (38.1 mm) dia.	1
12	222802	HOUSING, seat, piston valve; stainless steel w/tungsten carbide seat	1
14	184406	GUIDE, ball, intake; ductile iron	1
15	222794	HOUSING, seat, intake valve; ductile iron w/tungsten carbide seat	1
16✓	102974	BALL, intake; stainless steel; 2 in. (50.8 mm) dia.	1
17	184275	HOUSING, intake; ductile iron	1
19	222922	HOUSING, outlet; nickel-plated ductile iron	1
20	109203	SCREW, cap, hex hd; 5/8-11 unc-2A x 12 in. (305 mm)	6
31*	102857	O-RING; PTFE	1
32	165702	HOUSING, valve	1
33	190128	PLUG, valve	1



Parts

Standard Displacement Pumps

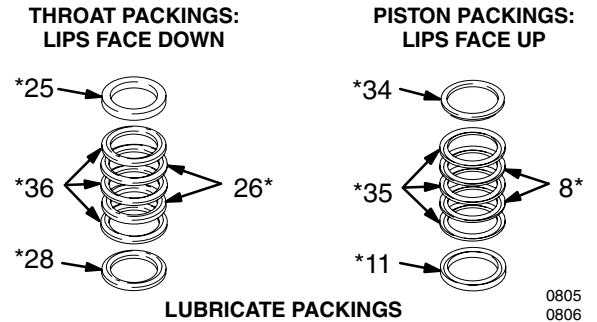
Displacement Pump 222801, Series A (PTFE and Leather Packings)



Ref No.	Part No.	Description	Qty
8*	109316	V-PACKING; piston; PTFE	3
11*	184186	GLAND, female; piston; stainless steel	1
13*	184316	V-PACKING; piston; leather	2
25*	184185	GLAND, female; throat; stainless steel	1
26*	109315	V-PACKING; throat; PTFE	3
27*	184315	V-PACKING; throat; leather	2
28*	184235	GLAND, male; throat; stainless steel	1
34*	184236	GLAND, male; piston; stainless steel	1

* These parts are included in Packing Repair Kit 222879, which may be purchased separately. For packing conversion kits, see right and page 31.

Displacement Pump 232699, Series A (UHMWPE and PTFE Packings)



Ref No.	Part No.	Description	Qty
8*	109316	V-PACKING; piston; PTFE	2
11*	184186	GLAND, female; piston; stainless steel	1
25*	184185	GLAND, female; throat; stainless steel	1
26*	109315	V-PACKING; throat; PTFE	2
28*	184235	GLAND, male; throat; stainless steel	1
34*	184236	GLAND, male; piston; stainless steel	1
35*	109266	V-PACKING; piston; UHMWPE	3
36*	109265	V-PACKING; throat; UHMWPE	3

* These parts are included in Packing Repair Kit 222875, which may be purchased separately. This kit can also be used to convert a pump to UHMWPE and PTFE packings.