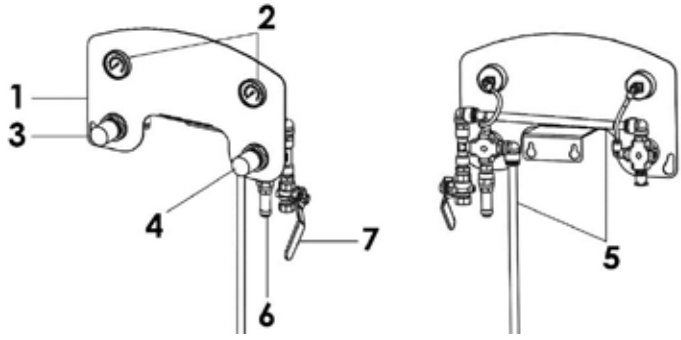


REF	DESCRIPTION	PN	QTY.
	EOS 15-C25 Airmix® Pump wall mounted without suction rod	151-140-000	1
	EOS 30-C25 Airmix® Pump wall mounted without suction rod	151-145-000	1
	EOS 15-C25 Airmix® Pump wall mounted with suction rod Ø 16	151-140-100	1
	EOS 30-C25 Airmix® Pump wall mounted with suction rod Ø 16	151-145-100	1
	EOS 15-C25 Airmix® Pump wall mounted with suction rod Ø 16 and fluid filter Ø 3/8"	151-140-150	1
	EOS 30-C25 Airmix® Pump wall mounted with suction rod Ø 16 and fluid filter Ø 3/8"	151-145-200	1
1	Air motor, model 245-4 (EOS 15-C25 Airmix®)	NS	1
1	Air motor, model 420-4 (EOS 30-C25 Airmix®)	NS	1
*2	Fluid section, model EOS C-25 (Material inlet M 16x125)	144-130-200	1
*3	Coupling housing kit	144-130-013	1
4	Coupling housing kit	NS	2
5	Screw	NS	2
6	Washer	NS	4
*7	Coupling kit	144-130-019	1
8	Axe	NS	1
9	Pin	NS	2
*10	Pump bracket	144-130-022	1
11	Pump bracket	NS	1
12	Screw, model H 6x16	NS	3
13	Washer, model AZ6	NS	1
-	Nuts, screws & tie-rods kit	144-130-195	1
-	Nut	-	4
-	Screw	-	8
-	Tie-rod, connecting	-	4
*14	Air supply	151-140-050	1
16	Elbow connector 1/4G - T 8x10	905-120-913	1
17	Suction rod Ø 16 - (EOS 15-C25 Airmix®)	149-596-050	1
18	Suction rod Ø 25 - (EOS 30-C25 Airmix®)	149-596-150	1
23	Suction rod Ø 16 for drum, model 200 L	149-596-060	1
24	Suction rod Ø 25 for drum, model 200 L	149-596-160	1
25	Strainer Ø 16	149-596-052	1
26	Strainer Ø 25	149-596-152	1
27	Fluid filter, model Ø 3/8"	155-580-600	1
-	Air hose (Ø 7 x 13 mm - 25 ft / 7.5 m)	82-2725-00	1
-	Hose sleeve 25 ft (7.5m)	669-990-102	1
-	Xcite® Airmix™ gun 120 bar and swivel fitting	135-720-100	1
-	Xcite® Airmix™ gun 200 bar and swivel fitting	135-720-200	1
-	Alrmix® hose Ø 4.8mm (25 ft / 7.5 m)	050-450-605	1
31	Gravity cup 1.6 gal (6 L)	151-140-230	1
-	Cup	NS	1
-	U adapter	NS	1
32	Screen, 18 mesh (pack of 2)	151-890-399	1
-	Lubricant T 4.4 oz (125 ml)	149-990-020	1

NS = Not Serviceable part
 * = Suggested Spare part

Air Supply



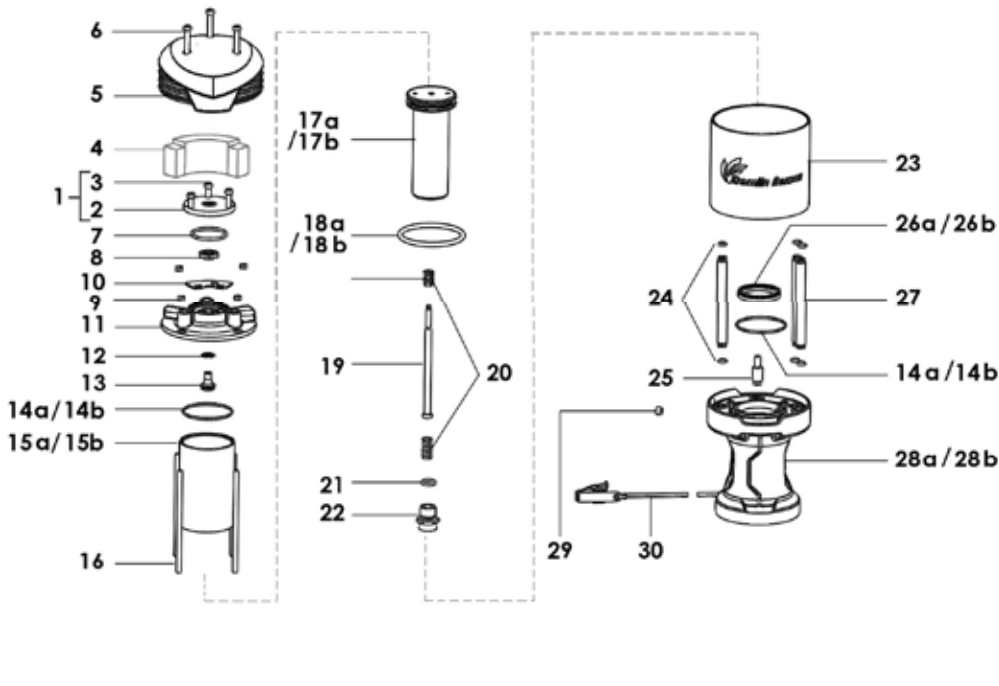
REF	DESCRIPTION	PN	QTY.
	Air supply for EOS Airmix® Pump	151-140-050	1
1	Bracket, air supply	151-140-055	1
2	Gauge, model 0-87 psi (0-60 bar)	910-011-205	2
3	Air regulator, model 1/4 gun	151-140-051	1
4	Air regulator, model 1/4 pump	151-140-052	1
5	Hose, model 8 x 10 length 10" (0.25 m)	050-372-125	1
6	Discharge valve	903-080-401	1
7	Valve, model F 3/8	903-090-209	1

Air Motor

REF	DESCRIPTION	PN	QTY.
*1	Cover assembly	144-130-016	1
2	Cover	NS	1
3	Screw, model CHc 6x25"	933-151-332	3
4	Muffler	144-130-011	1
*5	Cover	144-130-004	1
6	Screw, model CHc 6x45	933-151-523	3
7	Seal O-Ring, model Ø 50	909-420-220	1
8	Valve	144-130-010	1
9	Nut, model HM6	953-010-016	4
10	Exhaust grid	144-130-024	1
*11	Reversing body	144-130-003	1
12	Seal	909-210-501	1
13	Seal holder	144-130-008	1
16	Tie-rod	144-130-012	4
19	Control rod assembly	144-130-006	1
*20	Spring (pack of 2)	144-130-194	1
21	Seal O-Ring, model Ø 13	909-130-315	1
22	Coupling screw	144-130-020	1
23	Muffler	NS	1
24	NBR seal (black)	000-940-120	6

REF	DESCRIPTION	PN	QTY.
25	Pin	144-130-023	1
27	Tube, connecting	144-130-014	3
29	Plug (pack of 5)	144-130-192	1
30	Cable, ground (Length : 16.5ft (5m))	901-180-024	1
Specific parts to the air motor, model 245-4			
14a	Seal, cylinder	909-420-305	1
15a	Air cylinder	144-140-002	1
17a	Air piston	144-140-003	1
18a	Seal, model Ø 62 (air piston)	909-130-438	1
26a	U seal, model Ø 64	909-210-404	1
28a	Motor flange	144-140-001	1
Specific parts to the air motor, model 420-4			
14b	Seal, cylinder	909-420-304	1
15b	Air cylinder	144-130-009	1
17b	Air piston	144-130-002	1
18b	Seal, model Ø 45 (air piston)	909-130-447	1
26b	U seal, model Ø 75	909-210-403	1
28b	Motor flange	144-130-001	1
*	Servicing kit - Motor 245-4 (Ref. 7, 8, 12, 14a, 18a, 20, 21, 24, 26a)	144-140-190	1
*	Servicing kit - Motor 420-4 (Ref. 7, 8, 12, 14b, 18b, 20, 21, 24, 26b)	144-130-190	1
*	Reversing kit (Ref. 7, 8, 12, 13)	144-130-191	1

NS = Not Serviceable part
* = Suggested Spare part



Fluid Section

REF	DESCRIPTION	PN	QTY.
*1	Cartridge kit	144-130-205	1
2	Cartridge (stainless steel)	NS	1
3	Seal (pack of 5)	150-040-339	1
4	Tool for cartridge assembly	NS	1
5	Tool for packing assembly	NS	1
6	Outlet flange	144-130-294	1
*7	Cylinder (Ref. 8) + seal (ind. 9)	144-130-202	1
8	Cylinder	144-130-296	1
9	O Ring PTFE (x 10)	150-040-315	2
*10	Suction valve assembly M 26x125 (Ref. 11, 12, 13)	144-130-208	1
11	Ball stop (x 4)	144-130-209	1
12	Ball Ø 16 (stainless steel)	907-414-242	1
13	Pump foot M 26x125	144-130-399	1
*14	Piston assembly (ind. 15, 16, 17, 18)	144-130-213	1
15	Piston	NS	1
16	Ball, model Ø 9.52 (440 C stainless steel)	907-414-223	1
17	GT seal	144-130-299	1
18	Seat	144-130-298	1
*19	"Exhaust valve kit (Ref. 16, 17, 18)"	144-130-204	1
*20	"Cartridge and piston kit (Ref. 1, 14)"	144-130-289	1
21	Drain plug (x 5)	144-130-193	1
22	Adapter, stainless steel, double male, 3/8 NPT - # 5 JIC (1/2 JIC)	905-210-503	1
*	Servicing kit (Ref. 9, 12, 16, 17)	144-130-291	1
*-	Tool kit (Ref. 4, 5)	144-130-297	1

LT 999-600-173 ©2014 EXEL North America reserves the right to change without notice characteristics and services offered as well as equipment and attachments of these.



EXEL North America, Inc.
North American Headquarters
45001 5 Mile Road
Plymouth, MI 48170
Toll Free: (800) 573-5554
Phone: (734) 979-0100
Fax: (734) 927-0064

EXEL North America, Inc.
Canadian Branch
931 Progress Ave., Unit 7
Scarborough, Ontario M1G 3V5
Toll Free: (800) 450-0655
Phone: (416) 431-5017
Fax: (416) 431-9171

EXEL-NA, S.A. de C.V.
Acceso III N°16A Int 15A
Conjunto Quadrum
Parque Industrial Benito Juárez
Santiago de Querétaro, Qro.
México, C.P. 76120
+52 (442) 209-5027 /161-2595 Ext 170 Oficina